



## Wild Salmon and Sea Trout **Statistics 2005**



**Central Fisheries Board**  
An Príomh-Bhord Iascaigh





## CONTENTS

|  |    |
|--|----|
| The Central and Regional Fisheries Boards                  | 2  |
| Introduction   | 3  |
| Conservation of Salmon and Sea Trout Bye-Law No. 797, 2004 | 4  |
| Legislation  | 4  |
| References   | 4  |
| Chairman's Statement                                       | 5  |
| Summary Commercial Statistics                              | 8  |
| Summary Angling Statistics                                 | 11 |
| Commercial & Angling Tables 2005                           | 14 |
| Commercial Tables 2005                                     | 16 |
| Angling Tables 2005  | 25 |

## THE CENTRAL AND REGIONAL FISHERIES BOARDS

The Central Fisheries Board (CFB) is a statutory body operating under the aegis of the Department of Communications, Marine and Natural Resources and was established under the Fisheries Act, 1980.

The principal functions of the CFB are to advise the Minister of State at the Department of Communications, Marine and Natural Resources on policy relating to the conservation, protection, management, development and improvement of inland fisheries and sea angling, to support, coordinate and provide specialist support services to the Regional Fisheries Boards and to advise the Minister on the performance by the Regional Fisheries Boards of their functions.

The CFB also has responsibilities in the following areas:

- Preparation of National Inland Fisheries Development Plans
- Administration of funding programmes, both National and EU
- The promotion and marketing of angling
- The management of its fish rearing operations

There are seven Regional Fisheries Boards. These statutory bodies are responsible for maintaining and improving environmental quality and developing and protecting the fisheries resource in their region. The Regions are drawn up on a catchment basis. Each Fisheries Region is divided up into one or more Fishery districts, of which there are 17 in total. Commercial salmon fishermen are licensed to fish a particular fishery district. Angling licences are valid to fish all regions or a particular fishery district, depending on the type of licence purchased.



## INTRODUCTION

The Wild Salmon and Sea Trout Tagging Scheme commenced for both commercial and recreational salmon fishing licence holders on 1st January 2001, having been provided for in the Fisheries (Amendment) Act, 1999 (Number 35 of 1999).

2002 saw the introduction of Total Allowable Catches (TAC) for the commercial salmon fishing sector and bag limits for anglers. Following the report of the Standing Scientific Committee, the National Salmon Commission advise the Minister on target catch levels. Following consultation with the Central and Regional Fisheries Boards, the Minister sets the TAC for each of the 17 fishery districts.

The principal aims of these schemes are to provide a means of collecting accurate nominal catch statistics and estimates of salmon and sea trout stock exploitation, to develop best management strategies and to ensure these species are exploited in a manner consistent with their long-term sustainability on a national, regional, fishery district and river basis.

All fishermen must affix a coded tag to each salmon (or sea trout over 40 cm) they catch and retain. A logbook entry must then be made giving the details of the fish caught. All logbooks and unused tags must be returned to the regional boards within a period of 7 days after the last day of the relevant fishing season, or after the licence has been in force, as set out in the Wild Salmon and Sea Trout Tagging Scheme regulations (The relevant S.I. in place for the 2005 commercial and angling seasons was S.I. No. 204 of 2005).

The data contained in this report is taken from salmon licences and logbook data supplied by anglers. This data is entered by the Regional Fisheries Boards staff into databases and following this the validation, collation and analysis of the data is performed at the Central Fisheries Board and the final statistics report is produced.

## CONSERVATION OF SALMON AND SEA TROUT BYE-LAW NO. 797, 2004

2004 saw the introduction of the Conservation of Salmon and Sea Trout Bye-Law No. 797, 2004 – this bye-law was in force for the duration of the 2005 angling season. In this Bye-law, “salmon” means a fish of the species *Salmo salar* (Atlantic salmon) and “sea trout” means a fish of the migratory form of *Salmo trutta*, other than a sea trout which is 40 centimetres or less in length measured in a straight line from the tip of the snout to the fork of the tail.

The bye-law states that a person shall not take by rod and line more than 20 fish (being either salmon or sea trout or any combination of both fish) in any year. Bye-law No. 797 of 2004 also provides for a bag limit of 1 salmon (or 1 sea trout over 40 cm) per angler per day from 1 January to 31 May, and in the 2005 season, a bag limit of 3 fish (salmon or sea trout over 40 cm) per angler per day during the remainder of the year.

## LEGISLATION

Fisheries (Amendment) Act, 1999 – Number 35 of 1999

Salmon and Sea Trout Caught by Rod and Line (Prohibition on Sale) Order, 2001 – S.I. No. 53 of 2001

Wild Salmon and Sea Trout Tagging Scheme Regulations 2005 – S.I. No. 204 of 2005

Conservation of Salmon and Sea Trout Bye-law No. 797 of 2004

## REFERENCES

**Central Fisheries Board (2004)** 2001-2003 Wild Salmon and Sea Trout Tagging Scheme Fisheries Statistics Report. (<http://www.cfb.ie/pdf/sal03.pdf>)

**Central Fisheries Board (2005)** 2003-2004 Wild Salmon and Sea Trout Tagging Scheme Fisheries Statistics Report. (<http://www.cfb.ie/pdf/salmon05.pdf>)

**Central Fisheries Board (2005)** Irish Angling Catch Statistics 2004. (<http://www.cfb.ie/pdf/CatchStats04.pdf>)

**Standing Scientific Committee to the National Salmon Commission (2006)** The Status of Irish Salmon Stocks in 2005 and Precautionary Catch Advice for 2006. (<http://www.cfb.ie/Notices/salmoncommission.htm>)

**Small, I. (1991)** Exploring data provided by angling for salmonids in the British Isles. In: Catch Effort Sampling Strategies - their application in Freshwater Fisheries Management. I.G. Cowx (Ed.), Blackwell Scientific Publications Ltd.





## CHAIRMAN'S STATEMENT

It gives me great pleasure to present the 2005 Wild Salmon and Sea Trout Fisheries Statistics Report. This is the fifth year of the tagging scheme. The implementation of this initiative throughout the country has been an outstanding success. The use of tags and the operation of a quota system is now well established in Ireland. This report will supply valuable information to fisheries' managers, scientists, policy advisors and policy makers, including the Minister and Minister of State for Communications, Marine and Natural Resources, and help in designing and implementing successful policies and strategies for the conservation of salmon and sea trout stocks in Ireland. In addition, the angling statistics are important from a marketing perspective as they provide an insight into annual angling trends, helping to form the basis of marketing strategies and developing new angling initiatives.



The 2005 statistics show that the total number of salmon caught by all methods was 143,541 – this represents a drop of 15.5% on the total catch recorded in 2004. Overall, the number of salmon taken by all methods has dropped by nearly 45% from 2001 to 2005. In 2005, drift nets accounted for 70.5% of the total catch, anglers took 15.6%, draft nets accounted for 11.7% while the remaining 2.2% was captured by other engines.

The 2005 commercial catch was 121,180 salmon and 864 sea trout (over 40 cm). This was 12.8% below the Total Allowable Catch allocated to the sector. The biggest landings of salmon were in the Kerry and Cork districts with 19.8% and 13.4% of the commercial catch respectively.

The angling salmon catch was 22,361 salmon – a decrease of 15% on the 2004 season. Almost 30% of the national angling catch was taken on the Moy River system. Catch and release figures show that 12% of all salmon caught were released, an increase of 3% on 2004 figures. A total of 28,738 salmon rod licences were sold in 2005, representing anglers from forty different countries. 59% of anglers are from the Republic of Ireland, 15% from Northern Ireland and 13% from the UK.

I would like to commend the management and staff of the Central Fisheries Board, the Regional Fisheries Boards, the Standing Scientific Committee of the National Salmon Commission and all stakeholders in the sector for their tremendous dedicated work in making this scheme such a great success.

### **David Mackey**

*Chairman*

*Central Fisheries Board*

July 2006



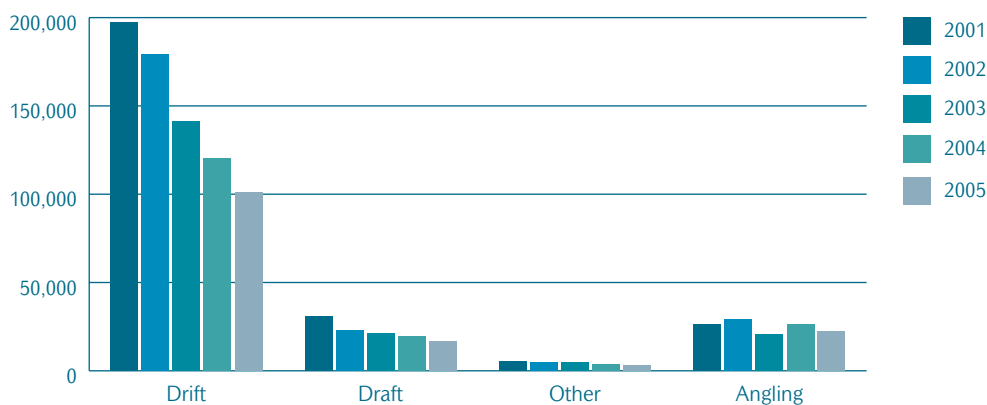
### Total Salmon Catch 2001 – 2005

| Year | Drift   | Draft  | Other | Angling | Total   | % change on previous year |
|------|---------|--------|-------|---------|---------|---------------------------|
| 2001 | 197,172 | 30,861 | 5,368 | 26,074  | 259,475 |                           |
| 2002 | 179,177 | 23,032 | 4,690 | 29,408  | 236,307 | – 8.9 %                   |
| 2003 | 141,222 | 21,100 | 4,552 | 20,888  | 187,762 | – 20.5 %                  |
| 2004 | 120,303 | 19,443 | 3,860 | 26,202  | 169,808 | – 9.6 %                   |
| 2005 | 101,231 | 16,735 | 3,214 | 22,361  | 143,541 | – 15.5%                   |

In 2001, the total catch of salmon by all engines was 259,475. By 2005, this had fallen to 143,541 (Table 1). This represents a decrease of 44.7% between 2001 and 2005.

For 2005, drift nets accounted for 70.52% of the total salmon catch, anglers took 15.58%, draft nets account for 11.66% of the catch while the remaining 2.24% was taken by other engines (Table 1).

**Fig. 1 Total salmon catch by all engines 2001 – 2005**



17.82% of the 2005 commercial and angling catch was taken in the Kerry district, 15.64% in the Ballina district and 12.11% in the Cork district (Table 1).





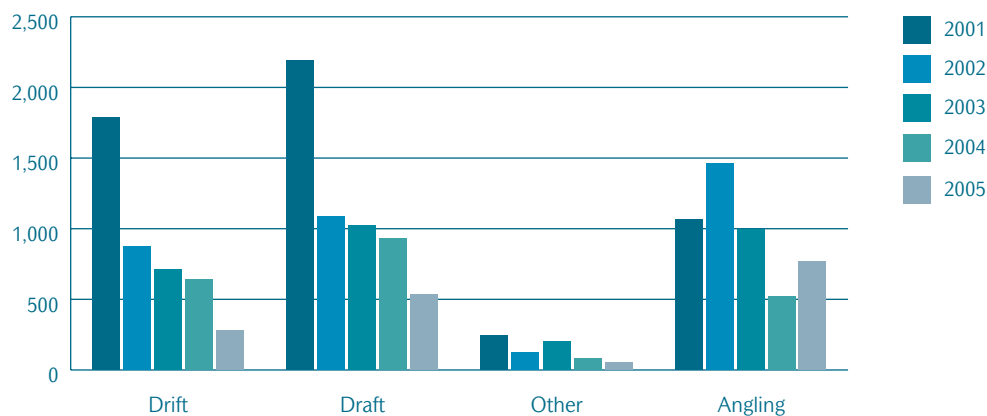
### Total Sea Trout (over 40 cm) Catch 2001 – 2005

| Year | Drift | Draft | Other | Angling | Total | % change on previous year |
|------|-------|-------|-------|---------|-------|---------------------------|
| 2001 | 1,787 | 2,192 | 246   | 1,066   | 5,291 |                           |
| 2002 | 874   | 1,083 | 126   | 1,464   | 3,547 | - 33 %                    |
| 2003 | 712   | 1,024 | 203   | 997     | 2,936 | - 17 %                    |
| 2004 | 640   | 929   | 78    | 519     | 2,166 | - 26 %                    |
| 2005 | 279   | 535   | 50    | 770     | 1,634 | - 25 %                    |

The total number of sea trout (over 40 cm) caught by both commercial and recreational fishermen from 2001-2005 is shown in the table above. The total catch for all sectors in 2001 was 5,291 sea trout (over 40 cm). By 2005, this had fallen to 1,634 sea trout, a drop of c. 69% (Table 2).

In 2005, anglers accounted for approximately 47% of the total sea trout catch, draft nets took 33%, drift nets account for 17% of the catch while the remaining 3% was taken by other engines (Table 2).

**Fig. 2 Total sea trout (over 40cm) catch 2001 – 2005.**



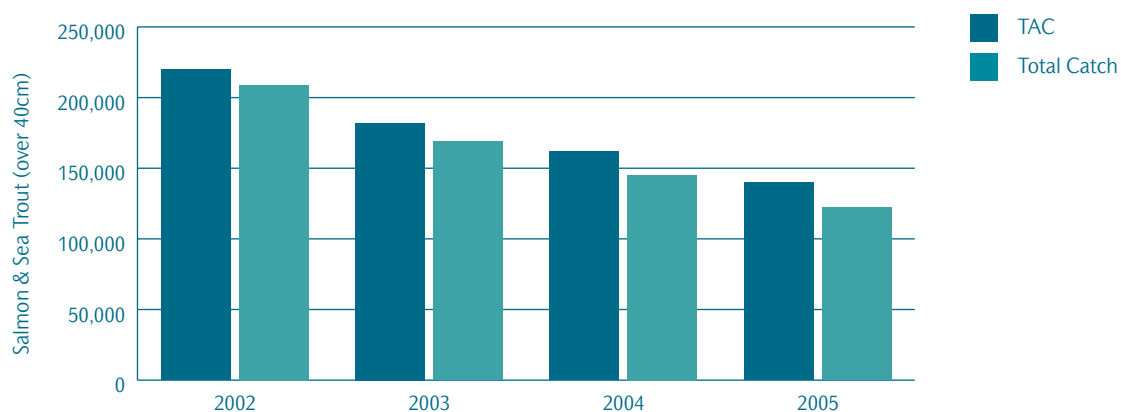
## SUMMARY COMMERCIAL STATISTICS

### Commercial Salmon & Sea Trout (over 40 cm) Catch 2001 – 2005

| Year | TAC     | Total Reported Catch | % below TAC |
|------|---------|----------------------|-------------|
| 2001 | -       | 237,626              |             |
| 2002 | 219,649 | 208,982              | 4.9 %       |
| 2003 | 182,000 | 168,819              | 7.2 %       |
| 2004 | 161,951 | 145,253              | 10.3 %      |
| 2005 | 139,900 | 122,044              | 12.8 %      |

The Total Allowable Catch (TAC) of salmon and sea trout (over 40 cm) provided for the commercial sector in 2005 was 139,900. The total reported catch was 122,044 – c. 12.8% below the TAC (Table 5).

### Fig. 3 Total Allowable Catch (TAC) and Total Reported Catch 2002 – 2005



### Commercial Salmon Catch 2005

Of the 2005 commercial salmon catch, 83.5% of salmon were taken by drift nets, 13.8% by draft nets and the remaining 2.7% by other engines (Table 3).

The biggest landings of salmon in 2005 were (Table 3):

| District    | Number Salmon | % of National Catch |
|-------------|---------------|---------------------|
| Kerry       | 24,048        | 19.84 %             |
| Cork        | 16,268        | 13.42 %             |
| Ballina     | 15,455        | 12.75 %             |
| Letterkenny | 14,420        | 11.90 %             |

In the drift net sector c. 13.6% of fishermen landed 52% of the salmon catch (Table 6).

In the draft net sector c. 6.4% of fishermen landed 38% of the salmon catch (Table 7).

2005 saw the introduction of Bye-Law No. 799 of 2005 which provided for the closure of the Waterford Drift Net Fishery during the period from the 4th July to the 7th July 2005 (week of the Waterford Tall Ships festival). The close of the drift net season in the Waterford District was deferred from the 1st August to the 5th August 2005 to compensate for the week lost earlier. In the last week of the Waterford Drift Net Fishery (1st – 5th August) 2358 salmon were caught. This is equivalent to 49.5% of the Waterford drift net catch.

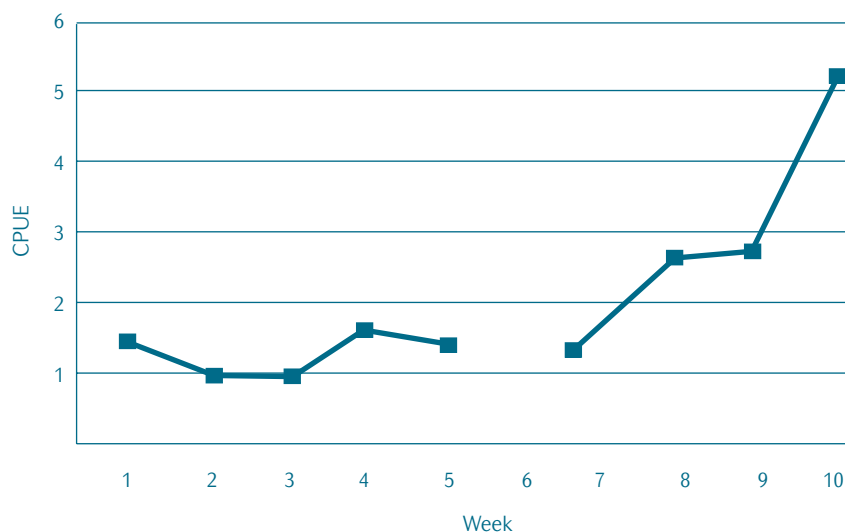


## Waterford Drift Net Catch 2005

| Week Start                       | Week End | Number of Licence Holders Fishing Per Day | Fishing Effort (Days) | Number Salmon Caught | CPUE |
|----------------------------------|----------|---|-----------------------|----------------------|------|
| 01-Jun                           | 03-Jun   | 2 - 44                                    | 83                    | 117                  | 1.41 |
| 06-Jun                           | 10-Jun   | 1 - 45                                    | 140                   | 136                  | 0.97 |
| 13-Jun                           | 17-Jun   | 14 - 30                                   | 86                    | 83                   | 0.97 |
| 20-Jun                           | 24-Jun   | 1 - 41                                    | 135                   | 213                  | 1.58 |
| 27-Jun                           | 01-Jul   | 21 - 39                                   | 117                   | 174                  | 1.49 |
| 04-Jul                           | 08-Jul   | -   | -                     | -                    | -    |
| 11-Jul                           | 15-Jul   | 11 - 48                                   | 187                   | 244                  | 1.30 |
| 18-Jul                           | 22-Jul   | 11 - 65                                   | 255                   | 648                  | 2.54 |
| 25-Jul                           | 29-Jul   | 17 - 82                                   | 272                   | 717                  | 2.64 |
| 01-Aug                           | 05-Aug   | 2 - 116                                   | 450                   | 2,358                | 5.24 |
| Recorded on dates outside season |          |   |                       | 76                   |      |
| <b>Totals</b>                    |          |   | <b>1715</b>           | <b>4,766</b>         |      |

While half the drift net catch in the Waterford District was caught in the last week, checks of commercial logbooks indicate that fishing effort increased by c. 40% in the last week of the season (compared to the last week in July). 116 commercial fishermen operating during the first week in August, compared to 82 in the last week of July. By summing the fishing effort of individual licence holders and calculating the total number of salmon caught it is possible to derive the CPUE for each week of the Waterford Drift Net Fishery.

**Fig. 4 Catch per Unit Effort (CPUE) for the Waterford drift net sector for the 2005 commercial season**



Both the CPUE and fishing effort fluctuated for the first month of the season, but increased throughout July. The largest increase in CPUE was recorded in the last week of the season.



## Commercial Salmon Catch Disposals 2005

The table below shows the 2005 commercial salmon catch disposals for drift and draft nets (Tables 9 & 10):

| 2005 Commercial Salmon Catch Disposals |                           |                           |
|--|---------------------------|---------------------------|
| Disposal Type                          | Drift Net (% total sales) | Draft Net (% total sales) |
| Domestic Consumption                   | 5.69 %                    | 16.24 %                   |
| Guesthouse / B&B                       | 0.76 %                    | 0.62 %                    |
| Hotel                                  | 0.70 %                    | 0.54 %                    |
| Licensed Salmon Dealers                | 65.24 %                   | 39.29 %                   |
| Private Sales                          | 23.86 %                   | 38.80 %                   |
| Restaurant                             | 2.87 %                    | 3.21 %                    |
| Unknown                                | 0.88 %                    | 1.29 %                    |

## Commercial Sea Trout (over 40 cm) Catch 2005

The commercial sea trout catch (over 40 cm) in 2005 was 864. The drift net fishery returned 32.3% of the sea trout catch, the draft nets 61.9% and the remaining 5.8% of sea trout were captured by other engines (Table 4).

Sea trout catches were highest in the Kerry District at c. 32% of the national catch (Table 4).

The proportion of sea trout in the national commercial catch of salmon and sea trout was 0.7%, down from 2% in 2001.



## SUMMARY ANGLING STATISTICS

### Angling Salmon Catch 2001 – 2005

The total reported number of salmon caught by rod and line in 2005 was 18,582 (Table 15). This was adjusted to 22,361 to account for those fish which were caught and for which no logbook was returned (Small, 1991). This represents a decrease of 14.7% on the 2004 salmon angling catch.

| Year | Salmon Tagged | % change on previous year |
|------|---------------|---------------------------|
| 2001 | 26,074        |                           |
| 2002 | 29,408        | + 12.8 %                  |
| 2003 | 20,888        | - 29.0 %                  |
| 2004 | 26,202        | + 25.4 %                  |
| 2005 | 22,361        | - 14.7 %                  |

### Angling Sea Trout (over 40 cm) Catch 2001 – 2005

The total number of sea trout (over 40cm) that were tagged in 2005 was 657 (Table 16). This was adjusted to 770 to account for those fish which were caught and for which no logbook was returned (Small, 1991). This represents a 48.4 % increase on the 2004 angling catch for sea trout (over 40 cm).

| Year | Sea Trout Tagged | % change on previous year |
|------|------------------|---------------------------|
| 2001 | 1,066            |                           |
| 2002 | 1,464            | + 37.3 %                  |
| 2003 | 997              | - 31.9 %                  |
| 2004 | 519              | - 47.9 %                  |
| 2005 | 770              | 48.4 %                    |

### Angling Salmon and Sea Trout (over 40 cm) Catch 2001 – 2005

The total number of salmon and sea trout (over 40 cm) tagged in 2005 was 23,131. This represents a decrease of 13% on the 2004 total rod catch of 26,721.

| Year | Angling Catch Salmon & Sea Trout | % change on previous year |
|------|----------------------------------|---------------------------|
| 2001 | 27,140                           |                           |
| 2002 | 30,872                           | + 14%                     |
| 2003 | 21,885                           | - 29%                     |
| 2004 | 26,721                           | + 22%                     |
| 2005 | 23,131                           | - 13%                     |

### Angling Licences Sold & Logbooks Returned 2001 – 2005

28,738 salmon rod licences were sold in 2005, a drop of 6.7% on 2004 licence sales (Tables 12 & 13).

Anglers returned 17,682 logbooks to the Regional Fisheries Boards in 2005, with a national return rate of 62%, up 4% on 2004 logbook returns (Tables 12 & 14).

| Year | Licences Sold | Logbooks Returned | % Return |
|------|---------------|-------------------|----------|
| 2001 | 32,814        | 14,238            | 43 %     |
| 2002 | 35,024        | 18,088            | 52 %     |
| 2003 | 31,809        | 18,088            | 57 %     |
| 2004 | 30,807        | 17,955            | 58 %     |
| 2005 | 28,738        | 17,682            | 62 %     |

## Salmon Angling Catch 2005

Almost a third of all salmon (31.3%) were taken in the Ballina district (Table 15).

29.9% of the national catch of salmon by rod and line in 2005 was taken on the Moy river system which had a reported catch of 5,213 salmon. This was adjusted to 6,675 salmon to account for those fish which were caught and for which no logbook was returned (Table 17).

Salmon were caught and tagged on 105 rivers and locations in 2005.

The top five salmon producing rivers made up over half (51.7%) of the national catch by rod and line in 2005. The top twenty salmon producing rivers together accounted for 83.4% of the national rod catch in 2005 (Table 17).

## Sea Trout (over 40 cm) Angling Catch 2005

44.7% of sea trout caught by rod and line were taken in the Kerry district (Table 16).

The Currane/Waterville system had a reported catch of 246 sea trout (over 40 cm). This was adjusted to 290 sea trout to account for those fish which were caught and for which no logbook was returned. This is an increase of 125% on the 2004 rod catch for sea trout (over 40 cm) on the Currane/Waterville river system and accounts for 37.7% of the national total sea trout catch by rod and line (Table 28).

## Catch per Angler

An analysis of the distribution of the caught and retained salmon catch indicated that 5,639 anglers tagged salmon in 2005 (Table 18). This is based only on those anglers who returned logbooks. Of those anglers who returned logbooks, the highest catch was recorded for an Irish angler in the North Western Region with a catch of 61 salmon. Of the 61 salmon caught in total, 17 were retained and 44 released. Two were caught on the Corrib and the remaining catch was recorded on the Moy River system. The next most successful salmon angler was also Irish and held an annual, all district A licence. His total recorded catch was 42 salmon, 15 of which were retained and 27 released. Four salmon were caught on the Slaney and the remaining catch was taken on the Owenmore River in the Bangor District.

## Catch and Release Estimates

Based on logbook returns to the Regional Fisheries Boards, catch and release estimates were compiled for 2005. A total of 2,553 salmon are recorded as having been released across all regions and 18,582 are recorded as having been retained and tagged (Table 19). The total reported catch of both caught & tagged and caught & released salmon is 21,135 giving a national catch and release rate of 12.1%. This is an increase of just over 3% on the 2004 figure. An analysis of the distribution of salmon caught and released per angler indicates that 887 anglers practised catch and release in 2005. Given that 5,639 anglers caught & tagged at least one salmon, almost 16% of successful anglers practised catch and release in 2005.

|                               |       |       |         |         |              |
|-------------------------------|-------|-------|---------|---------|--------------|
| No. of Salmon Released        | 1 - 4 | 5 - 9 | 10 - 14 | over 15 | <b>Total</b> |
| No. of Anglers Practicing C&R | 749   | 95    | 26      | 17      | <b>887</b>   |

## Angling Catch of Spring Salmon

An assessment on the number of salmon caught between 1st January 2005 and 31st May 2005 was made to estimate the number of spring (or multi-sea winter) salmon being taken by rod and line (Table 21). The figures are based on the reported catch only and are not adjusted to account for those spring fish which were caught and for which no logbook was returned. The reported catch indicates that 3,561 spring salmon were caught in 2005, 300 of which were released and 3,261 of which were retained and tagged. The figure of 3,261 spring salmon represents 17.5% of the total reported catch (18,582 spring fish and grilse). A total of 825 spring fish were reported as caught on the Moy river system and 244 spring fish are reported for the Slaney in 2005 (Table 21).





## Angler Nationality

Anglers from 40 different countries held salmon and sea trout rod licences in 2005 (Table 22).

58.74% of anglers were from the Republic of Ireland, 14.56% from Northern Ireland, 13.4% from the UK (UK, England, Scotland & Wales), 3.41% from France, 3.07% from Germany and 1.94% from the USA (Table 22).

Total licence sales in 2005 were down by 6.7% when compared to 2004. There was a reduction across all major categories of angler nationality with the exception of anglers originating from Germany where a small increase was recorded.

| Angler Nationality | Number of Anglers Buying Licences |        |
|--------------------|-----------------------------------|--------|
|                    | 2004                              | 2005   |
| Ireland            | 17,547                            | 16,881 |
| Northern Ireland   | 4,732                             | 4,184  |
| UK                 | 4,429                             | 3,853  |
| France             | 1,115                             | 980    |
| Germany            | 756                               | 882    |
| USA                | 662                               | 557    |

## Catch by Month & Capture Method

The reported salmon catch by month and capture method for the top five salmon producing rivers in 2005, namely the Moy, Blackwater (Munster), Ballysadare, Suir and the Feale are presented (Figs. 7 – 11).

## COMMERCIAL &amp; ANGLING TABLES 2005

## Total Commercial &amp; Angling Salmon Catch by District 2005

| District          | Drift          | Draft         | Snap         | Loop      | Bag        | Head Weir | Rod           | Total          | % catch by district |
|-------------------|----------------|---------------|--------------|-----------|------------|-----------|---------------|----------------|---------------------|
| Dundalk           | 0              | 468           | 0            | 0         | 0          | 0         | 219           | <b>687</b>     | 0.48%               |
| Drogheda          | 0              | 1,361         | 0            | 0         | 0          | 0         | 749           | <b>2,110</b>   | 1.47%               |
| Dublin            | 4              | 2             | 0            | 0         | 0          | 0         | 37            | <b>43</b>      | 0.03%               |
| Wexford           | 0              | 434           | 0            | 0         | 0          | 0         | 311           | <b>745</b>     | 0.52%               |
| Waterford         | 4,766          | 8             | 2,703        | 0         | 0          | 4         | 1,755         | <b>9,236</b>   | 6.43%               |
| Lismore           | 4,850          | 6             | 307          | 0         | 0          | 20        | 1,743         | <b>6,926</b>   | 4.83%               |
| Cork              | 14,743         | 1,415         | 0            | 0         | 110        | 0         | 1,116         | <b>17,384</b>  | 12.11%              |
| Kerry             | 18,448         | 5,561         | 0            | 0         | 39         | 0         | 1,537         | <b>25,585</b>  | 17.82%              |
| Limerick          | 7,391          | 1,777         | 0            | 0         | 0          | 0         | 1,300         | <b>10,468</b>  | 7.29%               |
| Galway            | 3,075          | 70            | 0            | 0         | 0          | 0         | 990           | <b>4,135</b>   | 2.88%               |
| Connemara         | 1,867          | 0             | 0            | 0         | 0          | 0         | 42            | <b>1,909</b>   | 1.33%               |
| Ballinakill       | 3,737          | 677           | 0            | 0         | 0          | 0         | 534           | <b>4,948</b>   | 3.45%               |
| Bangor            | 6,228          | 1,448         | 0            | 0         | 0          | 0         | 904           | <b>8,580</b>   | 5.98%               |
| Ballina           | 15,442         | 13            | 0            | 0         | 0          | 0         | 6,997         | <b>22,452</b>  | 15.64%              |
| Sligo             | 2,326          | 0             | 0            | 0         | 0          | 0         | 1,418         | <b>3,744</b>   | 2.61%               |
| Ballyshannon      | 5,392          | 2,068         | 0            | 0         | 0          | 0         | 1,465         | <b>8,925</b>   | 6.22%               |
| Letterkenny       | 12,962         | 1,427         | 0            | 31        | 0          | 0         | 923           | <b>15,343</b>  | 10.69%              |
| Unknown           | 0              | 0             | 0            | 0         | 0          | 0         | 321           | <b>321</b>     | 0.22%               |
| <b>Total</b>      | <b>101,231</b> | <b>16,735</b> | <b>3,010</b> | <b>31</b> | <b>149</b> | <b>24</b> | <b>22,361</b> | <b>143,541</b> | 100.00%             |
| % catch by engine | 70.52%         | 11.66%        | 2.10%        | 0.02%     | 0.10%      | 0.02%     | 15.58%        | 100.00%        |                     |

Table 1. Summary statistics for salmon catch for all engines including rod & line for 2005. Rod and line figures are the adjusted catch calculated after Small (1991). Also presented are the percentage catch by district and the percentage catch by engine.



## Total Commercial & Angling Sea Trout Catch by District 2005

| District          | Drift      | Draft      | Snap      | Loop     | Head Weir | Rod        | Total        | % catch per district |
|-------------------|------------|------------|-----------|----------|-----------|------------|--------------|----------------------|
| Dundalk           | 0          | 54         | 0         | 0        | 0         | 14         | <b>68</b>    | 4.16%                |
| Drogheda          | 0          | 22         | 0         | 0        | 0         | 21         | <b>43</b>    | 2.63%                |
| Dublin            | 41         | 56         | 0         | 0        | 0         | 25         | <b>122</b>   | 7.47%                |
| Wexford           | 0          | 79         | 0         | 0        | 0         | 23         | <b>102</b>   | 6.24%                |
| Waterford         | 53         | 0          | 39        | 0        | 1         | 19         | <b>112</b>   | 6.85%                |
| Lismore           | 57         | 0          | 9         | 0        | 0         | 17         | <b>83</b>    | 5.08%                |
| Cork              | 56         | 62         | 0         | 0        | 0         | 46         | <b>164</b>   | 10.04%               |
| Kerry             | 64         | 212        | 0         | 0        | 0         | 344        | <b>620</b>   | 37.94%               |
| Limerick          | 6          | 11         | 0         | 0        | 0         | 44         | <b>61</b>    | 3.73%                |
| Galway            | 0          | 0          | 0         | 0        | 0         | 0          | <b>0</b>     | 0.00%                |
| Connemara         | 0          | 0          | 0         | 0        | 0         | 0          | <b>0</b>     | 0.00%                |
| Ballinakill       | 0          | 0          | 0         | 0        | 0         | 0          | <b>0</b>     | 0.00%                |
| Bangor            | 0          | 3          | 0         | 0        | 0         | 27         | <b>30</b>    | 1.84%                |
| Ballina           | 0          | 0          | 0         | 0        | 0         | 53         | <b>53</b>    | 3.24%                |
| Sligo             | 0          | 0          | 0         | 0        | 0         | 21         | <b>21</b>    | 1.29%                |
| Ballyshannon      | 1          | 8          | 0         | 0        | 0         | 61         | <b>70</b>    | 4.28%                |
| Letterkenny       | 1          | 28         | 0         | 1        | 0         | 39         | <b>69</b>    | 4.22%                |
| Unknown           | 0          | 0          | 0         | 0        | 0         | 16         | <b>16</b>    | 0.98%                |
| <b>Total</b>      | <b>279</b> | <b>535</b> | <b>48</b> | <b>1</b> | <b>1</b>  | <b>770</b> | <b>1,634</b> | 100.00%              |
| % catch by engine | 17.07%     | 32.74%     | 2.94%     | 0.06%    | 0.06%     | 47.12%     | 100.00%      |                      |

Table 2. Summary statistics for the sea trout (over 40cm) catch for all engines including rod & line for 2005. Rod and line figures are the adjusted catch calculated after Small (1991). Also presented are the percentage catch by district and the percentage catch by engine.



## COMMERCIAL TABLES 2005

### 2005 Commercial Salmon Catch on a District Basis

| District          | Drift          | Draft         | Snap         | Loop      | Bag        | Head Weir | Total          | % catch by district |
|-------------------|----------------|---------------|--------------|-----------|------------|-----------|----------------|---------------------|
| Dundalk           | 0              | 468           | 0            | 0         | 0          | 0         | <b>468</b>     | 0.39                |
| Drogheda          | 0              | 1,361         | 0            | 0         | 0          | 0         | <b>1,361</b>   | 1.12                |
| Dublin            | 4              | 2             | 0            | 0         | 0          | 0         | <b>6</b>       | 0.00                |
| Wexford           | 0              | 434           | 0            | 0         | 0          | 0         | <b>434</b>     | 0.36                |
| Waterford         | 4,766          | 8             | 2,703        | 0         | 0          | 4         | <b>7,481</b>   | 6.17                |
| Lismore           | 4,850          | 6             | 307          | 0         | 0          | 20        | <b>5,183</b>   | 4.28                |
| Cork              | 14,743         | 1,415         | 0            | 0         | 110        | 0         | <b>16,268</b>  | 13.42               |
| Kerry             | 18,448         | 5,561         | 0            | 0         | 39         | 0         | <b>24,048</b>  | 19.84               |
| Limerick          | 7,391          | 1,777         | 0            | 0         | 0          | 0         | <b>9,168</b>   | 7.57                |
| Galway            | 3,075          | 70            | 0            | 0         | 0          | 0         | <b>3,145</b>   | 2.60                |
| Connemara         | 1,867          | 0             | 0            | 0         | 0          | 0         | <b>1,867</b>   | 1.54                |
| Ballinakill       | 3,737          | 677           | 0            | 0         | 0          | 0         | <b>4,414</b>   | 3.64                |
| Bangor            | 6,228          | 1,448         | 0            | 0         | 0          | 0         | <b>7,676</b>   | 6.33                |
| Ballina           | 15,442         | 13            | 0            | 0         | 0          | 0         | <b>15,455</b>  | 12.75               |
| Sligo             | 2,326          | 0             | 0            | 0         | 0          | 0         | <b>2,326</b>   | 1.92                |
| Ballyshannon      | 5,392          | 2,068         | 0            | 0         | 0          | 0         | <b>7,460</b>   | 6.16                |
| Letterkenny       | 12,962         | 1,427         | 0            | 31        | 0          | 0         | <b>14,420</b>  | 11.90               |
| <b>Total</b>      | <b>101,231</b> | <b>16,735</b> | <b>3,010</b> | <b>31</b> | <b>149</b> | <b>24</b> | <b>121,180</b> | 100.00              |
| % catch by engine | 83.54          | 13.81         | 2.48         | 0.03      | 0.12       | 0.02      | 100.00         |                     |

Table 3. Commercial salmon catch 2005 determined from logbook returns and presented by district and by fishing engine, including the % catch by engine and the % catch by district.



## 2005 Commercial Sea Trout (Over 40cm) Catch on a District Basis

| District          | Drift      | Draft      | Snap      | Loop     | Bag      | Head Weir | Total      | % catch by district |
|-------------------|------------|------------|-----------|----------|----------|-----------|------------|---------------------|
| Dundalk           | 0          | 54         | 0         | 0        | 0        | 0         | <b>54</b>  | 6.25                |
| Drogheda          | 0          | 22         | 0         | 0        | 0        | 0         | <b>22</b>  | 2.55                |
| Dublin            | 41         | 56         | 0         | 0        | 0        | 0         | <b>97</b>  | 11.23               |
| Wexford           | 0          | 79         | 0         | 0        | 0        | 0         | <b>79</b>  | 9.14                |
| Waterford         | 53         | 0          | 39        | 0        | 0        | 1         | <b>93</b>  | 10.76               |
| Lismore           | 57         | 0          | 9         | 0        | 0        | 0         | <b>66</b>  | 7.64                |
| Cork              | 56         | 62         | 0         | 0        | 0        | 0         | <b>118</b> | 13.66               |
| Kerry             | 64         | 212        | 0         | 0        | 0        | 0         | <b>276</b> | 31.94               |
| Limerick          | 6          | 11         | 0         | 0        | 0        | 0         | <b>17</b>  | 1.97                |
| Galway            | 0          | 0          | 0         | 0        | 0        | 0         | <b>0</b>   | 0.00                |
| Connemara         | 0          | 0          | 0         | 0        | 0        | 0         | <b>0</b>   | 0.00                |
| Ballinakill       | 0          | 0          | 0         | 0        | 0        | 0         | <b>0</b>   | 0.00                |
| Bangor            | 0          | 3          | 0         | 0        | 0        | 0         | <b>3</b>   | 0.35                |
| Ballina           | 0          | 0          | 0         | 0        | 0        | 0         | <b>0</b>   | 0.00                |
| Sligo             | 0          | 0          | 0         | 0        | 0        | 0         | <b>0</b>   | 0.00                |
| Ballyshannon      | 1          | 8          | 0         | 0        | 0        | 0         | <b>9</b>   | 1.04                |
| Letterkenny       | 1          | 28         | 0         | 1        | 0        | 0         | <b>30</b>  | 3.47                |
| <b>Total</b>      | <b>279</b> | <b>535</b> | <b>48</b> | <b>1</b> | <b>0</b> | <b>1</b>  | <b>864</b> | 100                 |
| % catch by engine | 32.29      | 61.92      | 5.56      | 0.12     | 0.00     | 0.12      | 100.00     |                     |

Table 4. Commercial sea trout (over 40 cm) catch 2005 determined from logbook returns and presented by district and by fishing engine, including the % catch by engine and the % catch by district.

### TAC and Reported Catch on a District Basis

| District     | TAC            | Total Reported Catch<br>2005 | % of TAC    |
|--------------|----------------|------------------------------|-------------|
| Dundalk      | 690            | 522                          | 75.7        |
| Drogheda     | 1,605          | 1,383                        | 86.2        |
| Dublin       | 312            | 103                          | 33.0        |
| Wexford      | 1,110          | 513                          | 46.2        |
| Waterford    | 9,622          | 7,574                        | 78.7        |
| Lismore      | 8,495          | 5,249                        | 61.8        |
| Cork         | 20,427         | 16,386                       | 80.2        |
| Kerry        | 24,870         | 24,324                       | 97.8        |
| Limerick     | 9,336          | 9,185                        | 98.4        |
| Galway       | 3,461          | 3,145                        | 90.9        |
| Connemara    | 2,277          | 1,867                        | 82.0        |
| Ballinakill  | 5,683          | 4,414                        | 77.7        |
| Bangor       | 8,521          | 7,679                        | 90.12       |
| Ballina      | 16,542         | 15,455                       | 93.43       |
| Sligo        | 3,563          | 2,326                        | 65.28       |
| Ballyshannon | 8,747          | 7,469                        | 85.4        |
| Letterkenny  | 14,639         | 14,450                       | 98.7        |
| <b>Total</b> | <b>139,900</b> | <b>122,044</b>               | <b>87.2</b> |

Table 5. Total allowable catch (TAC) of salmon and sea trout provided for the commercial sector in 2005, presented with the reported catch determined from commercial logbooks (rod caught fish not included). The percentage of TAC achieved per district is also presented.





### Analysis of Drift Net Salmon Catch on a District Basis For 2005

| District                           | 0    | 1-10  | 11-20 | 21-50 | 51-100 | 101-250 | 251-500 | 501-1000 | 1001-2000 | Total licence holders |
|------------------------------------|------|-------|-------|-------|--------|---------|---------|----------|-----------|-----------------------|
| Dundalk                            | 0    | 0     | 0     | 0     | 0      | 0       | 0       | 0        | 0         | 0                     |
| Drogheda                           | 0    | 0     | 0     | 0     | 0      | 0       | 0       | 0        | 0         | 0                     |
| Dublin                             | 14   | 2     | 0     | 0     | 0      | 0       | 0       | 0        | 0         | 16                    |
| Wexford                            | 0    | 0     | 0     | 0     | 0      | 0       | 0       | 0        | 0         | 0                     |
| Waterford                          | 1    | 68    | 25    | 58    | 13     | 4       | 2       | 0        | 0         | 171                   |
| Lismore                            | 5    | 16    | 8     | 16    | 17     | 19      | 0       | 0        | 0         | 81                    |
| Cork                               | 4    | 4     | 11    | 18    | 20     | 26      | 21      | 2        | 0         | 106                   |
| Kerry                              | 0    | 0     | 0     | 0     | 0      | 8       | 14      | 16       | 1         | 39                    |
| Limerick                           | 7    | 11    | 8     | 26    | 19     | 5       | 8       | 2        | 0         | 86                    |
| Galway                             | 4    | 1     | 2     | 15    | 7      | 5       | 2       | 1        | 0         | 37                    |
| Connemara                          | 8    | 3     | 5     | 3     | 4      | 4       | 2       | 0        | 0         | 29                    |
| Ballinakill                        | 2    | 2     | 2     | 9     | 12     | 10      | 3       | 0        | 0         | 40                    |
| Bangor                             | 1    | 0     | 3     | 9     | 3      | 18      | 6       | 1        | 0         | 41                    |
| Ballina                            | 4    | 2     | 2     | 8     | 9      | 27      | 7       | 7        | 2         | 68                    |
| Sligo                              | 0    | 1     | 1     | 1     | 0      | 2       | 4       | 1        | 0         | 10                    |
| Ballyshannon                       | 1    | 0     | 2     | 2     | 6      | 9       | 6       | 2        | 0         | 28                    |
| Letterkenny                        | 1    | 2     | 6     | 41    | 29     | 37      | 9       | 0        | 0         | 125                   |
| Total licence holders per category | 52   | 112   | 75    | 206   | 139    | 174     | 84      | 32       | 3         | 877                   |
| % licence holders per category     | 5.93 | 12.77 | 8.55  | 23.49 | 15.85  | 19.84   | 9.58    | 3.65     | 0.34      | 100                   |
| Catch per band                     | 0    | 643   | 1,210 | 7,169 | 10,339 | 29,074  | 28,888  | 20,469   | 3,439     | 101,231               |
| % catch per band                   | 0.00 | 0.64  | 1.20  | 7.08  | 10.21  | 28.72   | 28.54   | 20.22    | 3.40      | 100                   |

Table 6. An analysis of the commercial salmon catch by drift net fishing licence holders in 2005 on a district basis.



### Analysis of Draft Net Salmon Catch on a District Basis For 2005

| District                           | 0     | 1-10  | 11-20 | 21-50 | 51-100 | 101-250 | 251-500 | 501-1000 | 1001-2000 | Total licence holders |
|------------------------------------|-------|-------|-------|-------|--------|---------|---------|----------|-----------|-----------------------|
| Dundalk                            | 9     | 14    | 11    | 8     | 0      | 0       | 0       | 0        | 0         | 42                    |
| Drogheda                           | 12    | 4     | 5     | 22    | 4      | 3       | 0       | 0        | 0         | 50                    |
| Dublin                             | 8     | 2     | 0     | 0     | 0      | 0       | 0       | 0        | 0         | 10                    |
| Wexford                            | 15    | 51    | 8     | 1     | 0      | 0       | 0       | 0        | 0         | 75                    |
| Waterford                          | 1     | 2     | 0     | 0     | 0      | 0       | 0       | 0        | 0         | 3                     |
| Lismore                            | 4     | 2     | 0     | 0     | 0      | 0       | 0       | 0        | 0         | 6                     |
| Cork                               | 2     | 7     | 3     | 7     | 11     | 3       | 0       | 0        | 0         | 33                    |
| Kerry                              | 9     | 4     | 4     | 5     | 13     | 13      | 2       | 1        | 1         | 52                    |
| Limerick                           | 8     | 28    | 21    | 24    | 5      | 1       | 0       | 0        | 0         | 87                    |
| Galway                             | 2     | 0     | 0     | 2     | 0      | 0       | 0       | 0        | 0         | 4                     |
| Connemara                          | 0     | 0     | 0     | 0     | 0      | 0       | 0       | 0        | 0         | 0                     |
| Ballinakill                        | 5     | 1     | 4     | 3     | 3      | 0       | 1       | 0        | 0         | 17                    |
| Bangor                             | 0     | 1     | 9     | 10    | 3      | 6       | 0       | 0        | 0         | 29                    |
| Ballina                            | 0     | 0     | 1     | 0     | 0      | 0       | 0       | 0        | 0         | 1                     |
| Sligo                              | 0     | 0     | 0     | 0     | 0      | 0       | 0       | 0        | 0         | 0                     |
| Ballyshannon                       | 5     | 13    | 11    | 35    | 9      | 0       | 0       | 0        | 0         | 73                    |
| Letterkenny                        | 2     | 3     | 10    | 11    | 8      | 2       | 0       | 0        | 0         | 36                    |
| Total licence holders per category | 82    | 132   | 87    | 128   | 56     | 28      | 3       | 1        | 1         | 518                   |
| % licence holders per category     | 15.83 | 25.48 | 16.80 | 24.71 | 10.81  | 5.41    | 0.58    | 0.19     | 0.19      | 100                   |
| Catch per band                     | 0     | 765   | 1,482 | 4,159 | 3,987  | 3,693   | 782     | 620      | 1247      | 16,735                |
| % catch per band                   | 0.00  | 4.57  | 8.86  | 24.85 | 23.82  | 22.07   | 4.67    | 3.70     | 7.45      | 100                   |

Table 7. An analysis of the commercial salmon catch by draft net fishing licence holders in 2005 on a district basis.



### Analysis of Commercial Salmon Catch on a District Basis for 2005 (Loop, Snap, Bag & Head Weir)

| District                           | 0     | 1-10  | 11-20 | 21-50 | 51-100 | 101-250 | 251-500 | 501-1000 | 1001-2000 | Total licence holders |
|------------------------------------|-------|-------|-------|-------|--------|---------|---------|----------|-----------|-----------------------|
| Waterford                          | 13    | 50    | 24    | 34    | 10     | 1       | 1       | 0        | 0         | 133                   |
| Lismore                            | 2     | 2     | 1     | 0     | 2      | 1       | 0       | 0        | 0         | 8                     |
| Cork                               | 0     | 0     | 0     | 0     | 0      | 1       | 0       | 0        | 0         | 1                     |
| Kerry                              | 0     | 0     | 0     | 1     | 0      | 0       | 0       | 0        | 0         | 1                     |
| Letterkenny                        | 4     | 11    | 0     | 0     | 0      | 0       | 0       | 0        | 0         | 15                    |
| Total licence holders per category | 19    | 63    | 25    | 35    | 12     | 3       | 1       | 0        | 0         | 158                   |
| % licence holders per category     | 12.03 | 39.87 | 15.82 | 22.15 | 7.59   | 1.90    | 0.63    | 0.00     | 0.00      | 100                   |
| Catch per band                     | 0     | 288   | 379   | 1067  | 791    | 377     | 312     | 0        | 0         | 3214                  |
| % catch per band                   | 0.00  | 8.96  | 11.79 | 33.20 | 24.61  | 11.73   | 9.71    | 0.00     | 0.00      | 100                   |

Table 8. An analysis of the commercial salmon catch by other fishing licences (snap, loop, bag, head weir) in 2005 on a district basis.

### Analysis of Distribution of Sales and Disposals for Drift Nets on a District Basis For 2005

| District                       | Domestic Consumption | Guesthouse B&B | Hotel      | Licensed Salmon Dealers | Private Sales | Restaurant   | Unknown    | Total          |
|--------------------------------|----------------------|----------------|------------|-------------------------|---------------|--------------|------------|----------------|
| Dundalk                        | 0                    | 0              | 0          | 0                       | 0             | 0            | 0          | <b>0</b>       |
| Drogheda                       | 0                    | 0              | 0          | 0                       | 0             | 0            | 0          | <b>0</b>       |
| Dublin                         | 0                    | 0              | 0          | 0                       | 2             | 2            | 0          | <b>4</b>       |
| Wexford                        | 0                    | 0              | 0          | 0                       | 0             | 0            | 0          | <b>0</b>       |
| Waterford                      | 654                  | 0              | 20         | 2,379                   | 1,624         | 4            | 85         | <b>4,766</b>   |
| Lismore                        | 471                  | 7              | 0          | 3,333                   | 1,007         | 8            | 24         | <b>4,850</b>   |
| Cork                           | 786                  | 109            | 65         | 9,567                   | 3,514         | 514          | 188        | <b>14,743</b>  |
| Kerry                          | 585                  | 566            | 263        | 11,497                  | 3,858         | 1,620        | 59         | <b>18,448</b>  |
| Limerick                       | 570                  | 0              | 81         | 3,986                   | 2,558         | 196          | 0          | <b>7,391</b>   |
| Galway                         | 198                  | 0              | 36         | 616                     | 1,882         | 193          | 150        | <b>3,075</b>   |
| Connemara                      | 237                  | 0              | 30         | 930                     | 590           | 45           | 35         | <b>1,867</b>   |
| Ballinakill                    | 384                  | 26             | 146        | 1,764                   | 1,264         | 54           | 99         | <b>3,737</b>   |
| Bangor                         | 348                  | 0              | 9          | 4,785                   | 876           | 0            | 210        | <b>6,228</b>   |
| Ballina                        | 526                  | 5              | 0          | 11,083                  | 3,771         | 15           | 42         | <b>15,442</b>  |
| Sligo                          | 104                  | 0              | 0          | 1,297                   | 879           | 46           | 0          | <b>2,326</b>   |
| Ballyshannon                   | 426                  | 0              | 23         | 3,811                   | 1,037         | 95           | 0          | <b>5,392</b>   |
| Letterkenny                    | 473                  | 53             | 33         | 10,993                  | 1,295         | 115          | 0          | <b>12,962</b>  |
| <b>Total Sales by Category</b> | <b>5,762</b>         | <b>766</b>     | <b>706</b> | <b>66,041</b>           | <b>24,157</b> | <b>2,907</b> | <b>892</b> | <b>101,231</b> |
| % of total                     | 5.69                 | 0.76           | 0.70       | 65.24                   | 23.86         | 2.87         | 0.88       | 100            |

Table 9. An analysis of the distribution of sales and disposals for salmon caught by commercial fishermen in the drift net fishery by district in 2005.



### Analysis of Distribution of Sales and Disposals for Draft Nets on a District Basis For 2005

| District                       | Domestic Consumption | Guesthouse B&B | Hotel     | Licensed Salmon Dealers | Private Sales | Restaurant | Unknown    | Total         |
|--------------------------------|----------------------|----------------|-----------|-------------------------|---------------|------------|------------|---------------|
| Dundalk                        | 103                  | 0              | 0         | 87                      | 214           | 45         | 19         | <b>468</b>    |
| Drogheda                       | 303                  | 15             | 0         | 25                      | 947           | 9          | 62         | <b>1,361</b>  |
| Dublin                         | 0                    | 0              | 0         | 0                       | 2             | 0          | 0          | <b>2</b>      |
| Wexford                        | 214                  | 0              | 0         | 124                     | 95            | 1          | 0          | <b>434</b>    |
| Waterford                      | 7                    | 0              | 0         | 0                       | 0             | 0          | 1          | <b>8</b>      |
| Lismore                        | 1                    | 0              | 0         | 0                       | 5             | 0          | 0          | <b>6</b>      |
| Cork                           | 97                   | 0              | 0         | 506                     | 759           | 53         | 0          | <b>1,415</b>  |
| Kerry                          | 314                  | 26             | 0         | 3,829                   | 1,140         | 252        | 0          | <b>5,561</b>  |
| Limerick                       | 606                  | 0              | 16        | 176                     | 971           | 8          | 0          | <b>1,777</b>  |
| Galway                         | 5                    | 0              | 0         | 0                       | 65            | 0          | 0          | <b>70</b>     |
| Connemara                      | 0                    | 0              | 0         | 0                       | 0             | 0          | 0          | <b>0</b>      |
| Ballinakill                    | 102                  | 16             | 11        | 81                      | 395           | 0          | 72         | <b>677</b>    |
| Bangor                         | 296                  | 0              | 39        | 454                     | 610           | 24         | 25         | <b>1,448</b>  |
| Ballina                        | 13                   | 0              | 0         | 0                       | 0             | 0          | 0          | <b>13</b>     |
| Sligo                          | 0                    | 0              | 0         | 0                       | 0             | 0          | 0          | <b>0</b>      |
| Ballyshannon                   | 381                  | 5              | 12        | 825                     | 724           | 117        | 4          | <b>2,068</b>  |
| Letterkenny                    | 276                  | 42             | 13        | 468                     | 567           | 28         | 33         | <b>1,427</b>  |
| <b>Total Sales by Category</b> | <b>2,718</b>         | <b>104</b>     | <b>91</b> | <b>6,575</b>            | <b>6,494</b>  | <b>537</b> | <b>216</b> | <b>16,735</b> |
| % of total                     | 16.24                | 0.62           | 0.54      | 39.29                   | 38.80         | 3.21       | 1.29       | 100           |

Table 10. An analysis of the distribution of sales and disposals for salmon caught by commercial fishermen in the draft net fishery by district in 2005.

### Analysis of Distribution of Sales and Disposals for Draft Nets on a District Basis For 2005

| District                       | Domestic Consumption | Guesthouse B&B | Hotel      | Licensed Salmon Dealers | Private Sales | Restaurant | Unknown    | Total        |
|--------------------------------|----------------------|----------------|------------|-------------------------|---------------|------------|------------|--------------|
| Waterford                      | 459                  | 0              | 281        | 843                     | 831           | 14         | 279        | <b>2,707</b> |
| Lismore                        | 53                   | 0              | 0          | 272                     | 2             | 0          | 0          | <b>327</b>   |
| Cork                           | 1                    | 0              | 0          | 55                      | 54            | 0          | 0          | <b>110</b>   |
| Kerry                          | 11                   | 0              | 0          | 0                       | 6             | 22         | 0          | <b>39</b>    |
| Letterkenny                    | 25                   | 0              | 0          | 0                       | 6             | 0          | 0          | <b>31</b>    |
| <b>Total Sales by Category</b> | <b>549</b>           | <b>0</b>       | <b>281</b> | <b>1,170</b>            | <b>899</b>    | <b>36</b>  | <b>279</b> | <b>3,214</b> |
| % of total                     | 17.08                | 0.00           | 8.74       | 36.40                   | 27.97         | 1.12       | 8.68       | 100          |

Table 11. An analysis of the distribution of sales and disposals for salmon caught by commercial fishermen using other engines (snap, loop, bag and head weir) by district in 2005.



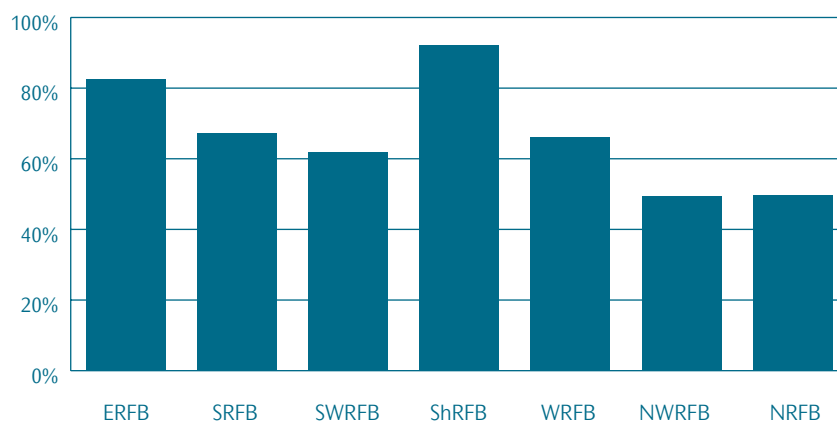
## ANGLING TABLES 2005

### Licence Sales and Logbook Returns 2005

| Region          | Licences Sold | Logbook Returns | % Returns    |
|-----------------|---------------|-----------------|--------------|
| Eastern         | 2,953         | 2,436           | 82.5%        |
| Southern        | 3,270         | 2,202           | 67.3%        |
| South Western   | 4,422         | 2,731           | 61.8%        |
| Shannon         | 2,083         | 1,918           | 92.1%        |
| Western         | 2,867         | 1,899           | 66.2%        |
| North Western   | 7,967         | 3,930           | 49.3%        |
| Northern        | 5,176         | 2,566           | 49.6%        |
| <b>National</b> | <b>28,738</b> | <b>17,682</b>   | <b>61.5%</b> |

Table 12. Total number of rod licences sold in 2005 and the number and percentage of logbooks returned to each region.

Fig. 5. Percentage of logbooks returned in 2005 by region.



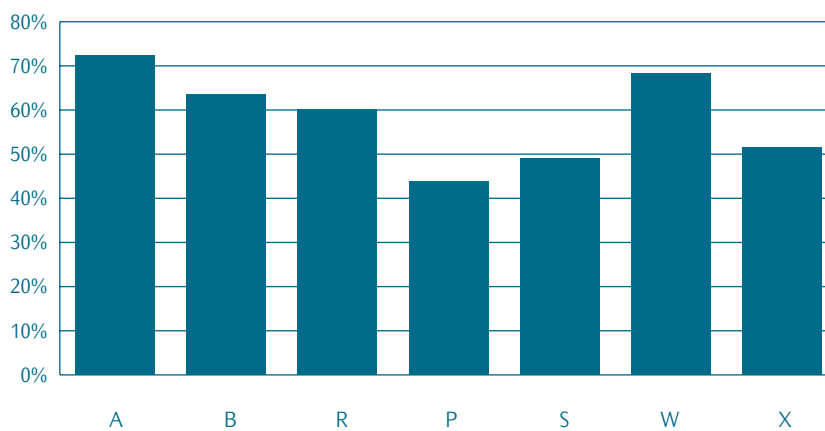
| Licence Category | Annual A     | District B    | 21 Day R     | Juvenile P   | 1 Day S      | Foyle AreaW | Special Local X | Region Total  |
|------------------|--------------|---------------|--------------|--------------|--------------|-------------|-----------------|---------------|
| Eastern          | 1,168        | 1,315         | 159          | 216          | 95           | 0           | 0               | <b>2,953</b>  |
| Southern         | 674          | 1,275         | 959          | 145          | 217          | 0           | 0               | <b>3,270</b>  |
| South Western    | 971          | 1,626         | 1,022        | 223          | 580          | 0           | 0               | <b>4,422</b>  |
| Shannon          | 625          | 1,091         | 175          | 128          | 64           | 0           | 0               | <b>2,083</b>  |
| Western          | 448          | 702           | 929          | 141          | 647          | 0           | 0               | <b>2,867</b>  |
| North Western    | 776          | 2,790         | 2,925        | 680          | 796          | 0           | 0               | <b>7,967</b>  |
| Northern         | 949          | 2,167         | 746          | 341          | 647          | 66          | 260             | <b>5,176</b>  |
| <b>Total</b>     | <b>5,611</b> | <b>10,966</b> | <b>6,915</b> | <b>1,874</b> | <b>3,046</b> | <b>66</b>   | <b>260</b>      | <b>28,738</b> |

Table 13. Breakdown of quantity and type of licences sold in 2005 by region.

| Licence Category          | Annual<br>A  | District<br>B | 21 Day<br>R  | Juvenile<br>P | 1 Day<br>S   | Foyle<br>Area W | Special<br>Local X | Region<br>Total |
|---------------------------|--------------|---------------|--------------|---------------|--------------|-----------------|--------------------|-----------------|
| Eastern                   | 1,032        | 1,107         | 122          | 113           | 62           | 0               | 0                  | <b>2,436</b>    |
| Southern                  | 491          | 887           | 601          | 98            | 125          | 0               | 0                  | <b>2,202</b>    |
| South Western             | 678          | 1,069         | 628          | 92            | 264          | 0               | 0                  | <b>2,731</b>    |
| Shannon                   | 590          | 990           | 167          | 112           | 59           | 0               | 0                  | <b>1,918</b>    |
| Western                   | 297          | 455           | 652          | 68            | 427          | 0               | 0                  | <b>1,899</b>    |
| North Western             | 434          | 1,397         | 1,543        | 235           | 321          | 0               | 0                  | <b>3,930</b>    |
| Northern                  | 540          | 1,062         | 446          | 102           | 237          | 45              | 134                | <b>2,566</b>    |
| <b>Total Returned</b>     | <b>4,062</b> | <b>6,967</b>  | <b>4,159</b> | <b>820</b>    | <b>1,495</b> | <b>45</b>       | <b>134</b>         | <b>17,682</b>   |
| Total Sold                | 5,611        | 10,966        | 6,915        | 1,874         | 3,046        | 66              | 260                | <b>28,738</b>   |
| % Return per Licence Type | 72.4%        | 63.5%         | 60.1%        | 43.8%         | 49.1%        | 68.2%           | 51.5%              | <b>61.5%</b>    |

Table 14. Breakdown of quantity and type of logbooks returned in 2005 by region, including total licences sold and the percentage logbook return by licence type.

Fig. 6. Logbooks returned in 2005 by licence type





## Salmon Angling Catch by District 2005

| District     | Reported Tagged Catch | Adjusted Catch | % Catch by District |
|--------------|-----------------------|----------------|---------------------|
| Dundalk      | 206                   | 219            | 1.0%                |
| Drogheda     | 698                   | 749            | 3.3%                |
| Dublin       | 35                    | 37             | 0.2%                |
| Wexford      | 288                   | 311            | 1.4%                |
| Waterford    | 1,539                 | 1,755          | 7.8%                |
| Lismore      | 1,518                 | 1,743          | 7.8%                |
| Cork         | 950                   | 1,116          | 5.0%                |
| Kerry        | 1,311                 | 1,537          | 6.9%                |
| Limerick     | 1,247                 | 1,300          | 5.8%                |
| Galway       | 865                   | 990            | 4.4%                |
| Connemara    | 38                    | 42             | 0.2%                |
| Ballinakill  | 460                   | 534            | 2.4%                |
| Bangor       | 725                   | 904            | 4.0%                |
| Ballina      | 5,461                 | 6,997          | 31.3%               |
| Sligo        | 1,102                 | 1,418          | 6.3%                |
| Ballyshannon | 1,132                 | 1,465          | 6.6%                |
| Letterkenny  | 715                   | 923            | 4.1%                |
| Unknown      | 292                   | 321            | 1.4%                |
| <b>Total</b> | <b>18,582</b>         | <b>22,361</b>  | <b>100%</b>         |

Table 15. Number of salmon caught & tagged by rod in each of the fisheries districts in 2005 as determined from angling logbook returns. The table shows the reported tagged catch as indicated in the logbooks and the adjusted catch to account for those fish captured but for which no logbook was returned. The method for adjusting the rod catch follows investigations published by Small (1991).



### Sea Trout (over 40 cm) Angling Catch by District 2005

| District     | Reported Tagged Catch | Adjusted Catch | % Catch by District |
|--------------|-----------------------|----------------|---------------------|
| Dundalk      | 14                    | 14             | 1.8%                |
| Drogheda     | 20                    | 21             | 2.7%                |
| Dublin       | 24                    | 25             | 3.2%                |
| Wexford      | 22                    | 23             | 3.0%                |
| Waterford    | 17                    | 19             | 2.5%                |
| Lismore      | 15                    | 17             | 2.2%                |
| Cork         | 39                    | 46             | 6.0%                |
| Kerry        | 293                   | 344            | 44.7%               |
| Limerick     | 40                    | 44             | 5.7%                |
| Galway       | 0                     | 0              | 0.0%                |
| Connemara    | 0                     | 0              | 0.0%                |
| Ballinakill  | 0                     | 0              | 0.0%                |
| Bangor       | 23                    | 27             | 3.5%                |
| Ballina      | 41                    | 53             | 6.9%                |
| Sligo        | 18                    | 21             | 2.7%                |
| Ballyshannon | 47                    | 61             | 7.9%                |
| Letterkenny  | 30                    | 39             | 5.1%                |
| Unknown      | 14                    | 16             | 2.1%                |
| <b>Total</b> | <b>657</b>            | <b>770</b>     | <b>100%</b>         |

Table 16. Number of sea trout (over 40cm) caught & tagged by rod in each of the fisheries districts in 2005 as determined from angling logbook returns. The table shows the reported tagged catch as indicated in the logbooks and the adjusted catch to account for those fish captured but for which no logbook was returned. The method for adjusting the rod catch follows investigations published by Small (1991).

## Top 20 Salmon Angling Rivers 2005

| Rod Catch Rank | River                       | River System Number | District     | Reported Tagged Catch | Adjusted Catch | Fluvial Habitat Accessible to Salmon Rank |
|----------------|-----------------------------|---------------------|--------------|-----------------------|----------------|---|
| 1              | <b>Moy</b>                  | 110                 | Ballina      | 5,213                 | 6,675          | 3   |
| 2              | <b>Blackwater (Munster)</b> | 190                 | Lismore      | 1,518                 | 1,743          | 2   |
| 3              | <b>Ballysadare</b>          | 116                 | Sligo        | 972                   | 1,247          | 13  |
| 4              | <b>Suir</b>                 | 182                 | Waterford    | 836                   | 954            | 1   |
| 5              | <b>Feale</b>                | 194                 | Limerick     | 906                   | 947            | 14  |
| 6              | <b>Corrib</b>               | 143                 | Galway       | 786                   | 900            | 8   |
| 7              | <b>Boyne</b>                | 159                 | Drogheda     | 698                   | 749            | 5   |
| 8              | <b>Drowes</b>               | 121                 | Ballyshannon | 551                   | 714            | 37  |
| 9              | <b>Laune</b>                | 207                 | Kerry        | 547                   | 638            | 12  |
| 10             | <b>Nore</b>                 | 184                 | Waterford    | 520                   | 593            | 4   |
| 11             | <b>Owenmore R.</b>          | 105                 | Bangor       | 433                   | 542            | 18  |
| 12             | <b>Lee (Cork)</b>           | 228                 | Cork         | 419                   | 492            | 22  |
| 13             | <b>Bandon</b>               | 229                 | Cork         | 375                   | 440            | 15  |
| 14             | <b>Owenea</b>               | 50                  | Letterkenny  | 263                   | 340            | 33  |
| 15             | <b>Slaney</b>               | 175                 | Wexford      | 288                   | 311            | 7   |
| 16             | <b>Eany Water</b>           | 57                  | Ballyshannon | 233                   | 302            | 30  |
| 17             | <b>Easky</b>                | 114                 | Ballina      | 231                   | 300            | 39  |
| 18             | <b>Shannon</b>              | 155                 | Limerick     | 288                   | 298            | 9   |
| 19             | <b>Owenduff</b>             | 106                 | Bangor       | 193                   | 238            | 31  |
| 20             | <b>Duff</b>                 | 120                 | Ballyshannon | 177                   | 230            | 44  |

Table 17. Top 20 salmon producing rivers in 2005 ranked in order of the adjusted catch (Small, 1991). Also presented is the total fluvial habitat accessible to salmon rank (Central Fisheries Board, 2003).

### Salmon Tagged per Angler

| No. of Salmon Tagged | Eastern    | Southern   | South Western | Shannon    | Western    | North Western | Northern   | Total No. of Anglers that Tagged Salmon |
|----------------------|------------|------------|---------------|------------|------------|---------------|------------|---|
| 1                    | 231        | 254        | 280           | 224        | 217        | 581           | 260        | <b>2,047</b>                            |
| 2                    | 104        | 154        | 140           | 95         | 91         | 339           | 140        | <b>1,063</b>                            |
| 3                    | 78         | 94         | 95            | 75         | 56         | 195           | 77         | <b>670</b>                              |
| 4                    | 38         | 66         | 74            | 35         | 33         | 118           | 50         | <b>414</b>                              |
| 5                    | 49         | 156        | 101           | 60         | 37         | 189           | 103        | <b>695</b>                              |
| 6                    | 16         | 14         | 11            | 9          | 8          | 47            | 17         | <b>122</b>                              |
| 7                    | 8          | 18         | 11            | 8          | 12         | 39            | 9          | <b>105</b>                              |
| 8                    | 13         | 17         | 10            | 8          | 3          | 32            | 10         | <b>93</b>                               |
| 9                    | 10         | 11         | 8             | 12         | 5          | 27            | 9          | <b>82</b>                               |
| 10                   | 18         | 32         | 10            | 13         | 6          | 51            | 18         | <b>148</b>                              |
| 11                   | 1          | 2          | 9             | 2          | 3          | 11            | 2          | <b>30</b>                               |
| 12                   | 3          | 2          | 3             | 1          | 4          | 15            | 5          | <b>33</b>                               |
| 13                   | 3          | 4          | 2             | 4          | 2          | 16            | 4          | <b>35</b>                               |
| 14                   | 3          | 2          | 3             | 1          | 2          | 7             | 4          | <b>22</b>                               |
| 15                   | 2          | 2          | 2             | 3          | 4          | 15            | 1          | <b>29</b>                               |
| 16                   | 4          | 0          | 0             | 0          | 2          | 4             | 0          | <b>10</b>                               |
| 17                   | 3          | 1          | 1             | 0          | 1          | 6             | 1          | <b>13</b>                               |
| 18                   | 2          | 0          | 0             | 2          | 0          | 4             | 2          | <b>10</b>                               |
| 19                   | 1          | 1          | 0             | 0          | 1          | 1             | 2          | <b>6</b>                                |
| 20                   | 1          | 2          | 2             | 0          | 0          | 6             | 1          | <b>12</b>                               |
| <b>Totals</b>        | <b>588</b> | <b>832</b> | <b>762</b>    | <b>552</b> | <b>487</b> | <b>1,703</b>  | <b>715</b> | <b>5,639</b>                            |

Table 18. Distribution of tagged salmon angling catch in 2005 determined from logbook returns.



### Catch & Release Estimates by Region 2005

|                      | ERFB  | SRFB  | SWRFB | ShRFB | WRFB  | NWRFB | NRFB  | National      |
|----------------------|-------|-------|-------|-------|-------|-------|-------|---------------|
| Total Reported Catch | 2,077 | 3,436 | 2,652 | 1,891 | 1,638 | 6,810 | 2,631 | <b>21,135</b> |
| Caught & Tagged      | 1,944 | 2,885 | 2,331 | 1,672 | 1,408 | 6,034 | 2,308 | <b>18,582</b> |
| Caught & Released    | 133   | 551   | 321   | 219   | 230   | 776   | 323   | <b>2,553</b>  |
| % Caught & Released  | 6.4%  | 16.0% | 12.1% | 11.6% | 14.0% | 11.4% | 12.3% | <b>12.1%</b>  |

Table 19. Catch and release estimates of salmon in each of the regions in 2005. The table shows the total reported catch, the number of salmon caught & tagged and the number of salmon caught & released. Also presented are the percentage of salmon caught & released for each of the regions.

### Salmon Caught & Released per Angler

| No. Salmon Released | ERFB      | SRFB       | SWRFB      | ShRFB     | WRFB       | NWRFB      | NRFB       | Totals     |
|---------------------|-----------|------------|------------|-----------|------------|------------|------------|------------|
| 1                   | 26        | 80         | 57         | 33        | 65         | 108        | 47         | <b>416</b> |
| 2                   | 15        | 32         | 23         | 20        | 19         | 52         | 26         | <b>187</b> |
| 3                   | 10        | 19         | 8          | 10        | 8          | 21         | 11         | <b>87</b>  |
| 4                   | 1         | 15         | 7          | 9         | 8          | 13         | 6          | <b>59</b>  |
| 5                   | 1         | 6          | 5          | 3         | 7          | 8          | 6          | <b>36</b>  |
| 6                   | 2         | 4          | 1          | 3         | 2          | 7          | 5          | <b>24</b>  |
| 7                   | 1         | 4          | 0          | 1         | 0          | 8          | 0          | <b>14</b>  |
| 8                   | 1         | 3          | 0          | 2         | 0          | 3          | 2          | <b>11</b>  |
| 9                   | 0         | 0          | 2          | 0         | 0          | 6          | 2          | <b>10</b>  |
| 10                  | 0         | 4          | 1          | 1         | 0          | 2          | 1          | <b>9</b>   |
| 11                  | 1         | 1          | 1          | 0         | 0          | 0          | 1          | <b>4</b>   |
| 12                  | 0         | 2          | 0          | 0         | 2          | 1          | 0          | <b>5</b>   |
| 13                  | 0         | 1          | 0          | 0         | 0          | 0          | 1          | <b>2</b>   |
| 14                  | 0         | 4          | 0          | 1         | 0          | 1          | 0          | <b>6</b>   |
| 15                  | 0         | 0          | 0          | 0         | 0          | 1          | 0          | <b>1</b>   |
| 16                  | 0         | 0          | 0          | 0         | 0          | 0          | 0          | <b>0</b>   |
| 17                  | 0         | 0          | 2          | 0         | 0          | 2          | 0          | <b>4</b>   |
| 18                  | 0         | 1          | 0          | 0         | 0          | 0          | 1          | <b>2</b>   |
| 19                  | 0         | 0          | 0          | 0         | 0          | 0          | 0          | <b>0</b>   |
| 20                  | 0         | 0          | 2          | 0         | 0          | 1          | 0          | <b>3</b>   |
| 21                  | 0         | 0          | 0          | 0         | 0          | 0          | 1          | <b>1</b>   |
| 22                  | 0         | 1          | 1          | 0         | 0          | 0          | 0          | <b>2</b>   |
| 23                  | 0         | 0          | 0          | 0         | 0          | 1          | 0          | <b>1</b>   |
| 24                  | 0         | 0          | 0          | 0         | 0          | 1          | 0          | <b>1</b>   |
| 27                  | 0         | 0          | 0          | 0         | 0          | 1          | 0          | <b>1</b>   |
| 44                  | 0         | 0          | 0          | 0         | 0          | 1          | 0          | <b>1</b>   |
| <b>Totals</b>       | <b>58</b> | <b>177</b> | <b>110</b> | <b>83</b> | <b>111</b> | <b>238</b> | <b>110</b> | <b>887</b> |

Table 20. Distribution of salmon caught & released in 2005 as determined from logbook returns.





## Angling Catch Spring Salmon 2005

| Rank | River                  | River System Number | District     | Springers Caught & Tagged | Springers Caught & Released | Total Springers Caught | % of Springers Caught & Released |
|------|------------------------|---------------------|--------------|---------------------------|-----------------------------|------------------------|----------------------------------|
| 1    | Moy                    | 110                 | Ballina      | 779                       | 46                          | <b>825</b>             | 5.6%                             |
| 2    | Slaney                 | 175                 | Wexford      | 225                       | 19                          | <b>244</b>             | 7.8%                             |
| 3    | Blackwater             | 190                 | Lismore      | 185                       | 42                          | <b>227</b>             | 18.5%                            |
| 4    | Feale                  | 194                 | Limerick     | 181                       | 16                          | <b>197</b>             | 8.1%                             |
| 5    | Laune                  | 207                 | Kerry        | 161                       | 16                          | <b>177</b>             | 9.0%                             |
| 6    | Lee (Cork)             | 228                 | Cork         | 143                       | 24                          | <b>167</b>             | 14.4%                            |
| 7    | Drowes                 | 121                 | Ballyshannon | 151                       | 3                           | <b>154</b>             | 1.9%                             |
| 8    | Corrib                 | 143                 | Galway       | 146                       | 8                           | <b>154</b>             | 5.2%                             |
| 9    | Owenmore R.            | 105                 | Bangor       | 93                        | 10                          | <b>103</b>             | 9.7%                             |
| 10   | Shannon                | 155                 | Limerick     | 84                        | 19                          | <b>103</b>             | 18.4%                            |
| 11   | Owenduff               | 106                 | Bangor       | 84                        | 13                          | <b>97</b>              | 13.4%                            |
| 12   | Ballysadare            | 116                 | Sligo        | 89                        | 2                           | <b>91</b>              | 2.2%                             |
| 13   | Boyne                  | 159                 | Drogheda     | 89                        | 1                           | <b>90</b>              | 1.1%                             |
| 14   | Nore                   | 184                 | Waterford    | 80                        | 8                           | <b>88</b>              | 9.1%                             |
| 15   | Unknown                |                     | Unknown      | 74                        | 3                           | <b>77</b>              | 3.9%                             |
| 16   | Bandon                 | 229                 | Cork         | 71                        | 5                           | <b>76</b>              | 6.6%                             |
| 17   | Currane/<br>Waterville | 213                 | Kerry        | 69                        | 2                           | <b>71</b>              | 2.8%                             |
| 18   | Bundorragha            | 130                 | Ballinakill  | 59                        | 9                           | <b>68</b>              | 13.2%                            |
| 19   | Barrow                 | 183                 | Waterford    | 59                        | 3                           | <b>62</b>              | 4.8%                             |
| 20   | Kerry District         | 260                 | Kerry        | 48                        | 4                           | <b>52</b>              | 7.7%                             |
| 21   | Suir                   | 182                 | Waterford    | 46                        | 4                           | <b>50</b>              | 8.0%                             |
| 22   | Garvogue               | 117                 | Sligo        | 48                        | 1                           | <b>49</b>              | 2.0%                             |
| 23   | Caragh L.              | 208                 | Kerry        | 45                        | 1                           | <b>46</b>              | 2.2%                             |
| 24   | Fergus                 | 158                 | Limerick     | 24                        | 7                           | <b>31</b>              | 22.6%                            |
| 25   | Lackagh                | 27                  | Letterkenny  | 26                        | 1                           | <b>27</b>              | 3.7%                             |
| 26   | Leannan                | 31                  | Letterkenny  | 19                        | 4                           | <b>23</b>              | 17.4%                            |
| 27   | Newport R.             | 108                 | Bangor       | 18                        | 1                           | <b>19</b>              | 5.3%                             |
| 28   | Gweebarra              | 48                  | Letterkenny  | 12                        | 4                           | <b>16</b>              | 25.0%                            |
| 29   | Roughly                | 217                 | Kerry        | 13                        | 1                           | <b>14</b>              | 7.1%                             |
| 30   | Crana                  | 9                   | Letterkenny  | 13                        | 0                           | <b>13</b>              | 0.0%                             |
| 31   | Erriff                 | 131                 | Ballinakill  | 9                         | 1                           | <b>10</b>              | 10.0%                            |
| 32   | Drumcliff              | 119                 | Sligo        | 10                        | 0                           | <b>10</b>              | 0.0%                             |
| 33   | Owenea                 | 50                  | Letterkenny  | 3                         | 6                           | <b>9</b>               | 66.7%                            |
| 34   | Duff                   | 120                 | Ballyshannon | 8                         | 0                           | <b>8</b>               | 0.0%                             |
| 35   | Ilen                   | 233                 | Cork         | 6                         | 2                           | <b>8</b>               | 25.0%                            |
| 36   | Maine                  | 197                 | Kerry        | 1                         | 7                           | <b>8</b>               | 87.5%                            |
| 37   | Erne                   | 123                 | Ballyshannon | 6                         | 1                           | <b>7</b>               | 14.3%                            |



| Rank | River                | River System Number | District     | Springers Caught & Tagged | Springers Caught & Released | Total Springers Caught | % of Springers Caught & Released |
|------|----------------------|---------------------|--------------|---------------------------|-----------------------------|------------------------|----------------------------------|
| 38   | Bunowen              | 127                 | Ballinakill  | 5                         | 1                           | 6                      | 16.7%                            |
| 39   | Blackwater           | 215                 | Kerry        | 6                         | 0                           | 6                      | 0.0%                             |
| 40   | Glanmore R. and L.   | 222                 | Kerry        | 6                         | 0                           | 6                      | 0.0%                             |
| 41   | Crolly R.            | 22                  | Letterkenny  | 6                         | 0                           | 6                      | 0.0%                             |
| 42   | Owenee               | 126                 | Ballinakill  | 3                         | 2                           | 5                      | 40.0%                            |
| 43   | Eask L. (Eske)       | 58                  | Ballyshannon | 5                         | 0                           | 5                      | 0.0%                             |
| 44   | Dee                  | 96                  | Dundalk      | 5                         | 0                           | 5                      | 0.0%                             |
| 45   | Sheen                | 218                 | Kerry        | 5                         | 0                           | 5                      | 0.0%                             |
| 46   | Owenglin             | 135                 | Ballinakill  | 4                         | 0                           | 4                      | 0.0%                             |
| 47   | Glyde                | 95                  | Dundalk      | 4                         | 0                           | 4                      | 0.0%                             |
| 48   | Owenriff             | 140                 | Galway       | 4                         | 0                           | 4                      | 0.0%                             |
| 49   | Carrownisky          | 128                 | Ballinakill  | 2                         | 1                           | 3                      | 33.3%                            |
| 50   | Sneem                | 214                 | Kerry        | 3                         | 0                           | 3                      | 0.0%                             |
| 51   | Culfin               | 132                 | Ballinakill  | 2                         | 0                           | 2                      | 0.0%                             |
| 52   | Eany Water           | 57                  | Ballyshannon | 2                         | 0                           | 2                      | 0.0%                             |
| 53   | Costello             | 138                 | Connemara    | 2                         | 0                           | 2                      | 0.0%                             |
| 54   | Kilcolgan            | 145                 | Galway       | 2                         | 0                           | 2                      | 0.0%                             |
| 55   | Galway District      | 262                 | Galway       | 2                         | 0                           | 2                      | 0.0%                             |
| 56   | Inny                 | 212                 | Kerry        | 1                         | 1                           | 2                      | 50.0%                            |
| 57   | Owenshagh            | 221                 | Kerry        | 2                         | 0                           | 2                      | 0.0%                             |
| 58   | Easky                | 114                 | Ballina      | 1                         | 0                           | 1                      | 0.0%                             |
| 59   | Dawros               | 133                 | Ballinakill  | 1                         | 0                           | 1                      | 0.0%                             |
| 60   | Glen                 | 52                  | Ballyshannon | 1                         | 0                           | 1                      | 0.0%                             |
| 61   | Glenamoy             | 100                 | Bangor       | 1                         | 0                           | 1                      | 0.0%                             |
| 62   | Screebe L.           | 239                 | Connemara    | 1                         | 0                           | 1                      | 0.0%                             |
| 63   | Mealagh              | 227                 | Cork         | 1                         | 0                           | 1                      | 0.0%                             |
| 64   | Cork District        | 259                 | Cork         | 1                         | 0                           | 1                      | 0.0%                             |
| 65   | Liffey               | 168                 | Dublin       | 1                         | 0                           | 1                      | 0.0%                             |
| 66   | Owenboliska          | 141                 | Galway       | 1                         | 0                           | 1                      | 0.0%                             |
| 67   | Clady                | 23                  | Letterkenny  | 1                         | 0                           | 1                      | 0.0%                             |
| 68   | Tullaghobegly        | 24                  | Letterkenny  | 1                         | 0                           | 1                      | 0.0%                             |
| 69   | Letterkenny District | 269                 | Letterkenny  | 1                         | 0                           | 1                      | 0.0%                             |
| 70   | Aughrim              | 171                 | Wexford      | 1                         | 0                           | 1                      | 0.0%                             |
| 71   | Bride                | 191                 | Lismore      | 0                         | 1                           | 1                      | 100.0%                           |
|      |                      |                     |              | <b>3261</b>               | <b>300</b>                  | <b>3561</b>            | <b>8.4%</b>                      |

Table 21. Spring salmon producing rivers ranked in order of the reported angling catch only (Small, 1991). Also presented is the percentage of spring fish released per river.

## Angler Nationality 2005

| Nationality          | ERFB         | SRFB         | SWRFB        | ShRFB        | WRFB         | NWRFB        | NRFB         | Total         |
|----------------------|--------------|--------------|--------------|--------------|--------------|--------------|--------------|---------------|
| Africa               |              |              |              |              |              | 2            |              | 2             |
| Australia            |              | 4            | 2            |              | 8            | 3            | 2            | 19            |
| Austria              |              | 5            | 2            | 1            | 6            | 51           | 19           | 84            |
| Belgium              | 1            | 38           | 18           | 1            | 12           | 24           | 10           | 104           |
| Canada               |              | 4            | 8            | 1            | 8            | 13           | 2            | 36            |
| Channel Islands      |              | 1            |              |              |              | 2            |              | 3             |
| Cyprus               |              |              |              |              |              | 1            |              | 1             |
| Czech Republic       |              | 1            |              |              |              |              |              | 1             |
| Denmark              |              | 5            | 5            | 1            |              | 10           | 4            | 25            |
| England              | 15           | 15           | 58           | 39           | 334          | 1,342        | 154          | 1,957         |
| Fiji                 |              |              |              |              |              | 2            |              | 2             |
| Finland              |              | 2            |              |              | 3            | 11           | 1            | 17            |
| France               | 17           | 71           | 122          | 32           | 84           | 541          | 113          | 980           |
| Germany              | 2            | 16           | 144          | 16           | 91           | 341          | 272          | 882           |
| Holland              | 1            | 4            | 10           | 3            | 7            | 9            | 11           | 45            |
| Iceland              | 3            | 1            | 3            | 3            |              | 6            |              | 16            |
| Ireland              | 2,805        | 2,122        | 2,992        | 1,935        | 1,556        | 3,780        | 1,691        | 16,881        |
| Isle Of Man          | 9            | 3            | 2            |              | 4            | 12           | 1            | 31            |
| Italy                |              | 3            | 7            |              | 20           | 23           | 2            | 55            |
| Japan                |              |              |              |              | 5            |              |              | 5             |
| Latvia               |              |              |              |              |              | 1            |              | 1             |
| Luxembourg           |              | 3            | 8            |              | 3            | 4            | 3            | 21            |
| Netherlands          | 1            | 11           | 28           | 1            | 4            | 30           | 7            | 82            |
| New Zealand          |              | 1            | 1            |              | 1            | 2            | 7            | 12            |
| Northern Ireland     | 29           | 14           | 36           | 10           | 142          | 1,288        | 2,665        | 4,184         |
| Norway               |              | 4            |              |              |              |              | 1            | 5             |
| Poland               |              |              | 3            |              |              |              |              | 3             |
| Portugal             |              |              |              |              |              | 5            |              | 5             |
| Russia               |              |              |              |              |              | 2            |              | 2             |
| Scotland             | 1            | 10           | 16           | 6            | 35           | 147          | 67           | 282           |
| Slovenia             |              |              |              |              | 3            |              |              | 3             |
| South Africa         |              |              | 4            | 1            | 3            | 4            | 2            | 14            |
| Spain                | 1            | 63           | 9            | 1            | 16           | 12           | 5            | 107           |
| Sweden               |              | 3            | 2            |              | 1            | 7            | 3            | 16            |
| Switzerland          |              | 23           | 17           | 4            | 23           | 86           | 33           | 186           |
| United Arab Emirates |              | 2            | 3            |              | 1            | 3            |              | 9             |
| United Kingdom       | 45           | 690          | 474          | 22           | 173          |              | 25           | 1,429         |
| Unknown              | 17           | 78           | 201          | 2            | 102          | 17           | 49           | 466           |
| USA                  | 4            | 62           | 214          | 4            | 200          | 63           | 10           | 557           |
| Wales                | 1            | 11           | 33           |              |              | 123          | 17           | 185           |
| Zimbabwe             | 1            |              |              |              | 22           |              |              | 23            |
| <b>Total</b>         | <b>2,953</b> | <b>3,270</b> | <b>4,422</b> | <b>2,083</b> | <b>2,867</b> | <b>7,967</b> | <b>5,176</b> | <b>28,738</b> |

Table 22. Total number of rod licences sold in 2005 by angler nationality (taken from the address supplied at the time the licence was purchased).



## Angling Catch by River System – Eastern Regional Fisheries Board

| River System | River System Number | District | Reported Salmon Catch | Adjusted Salmon Catch |
|--------------|---------------------|----------|-----------------------|-----------------------|
| Flurry Water | 91                  | Dundalk  | 1                     | 1                     |
| Castletown   | 92                  | Dundalk  | 17                    | 18                    |
| Fane         | 94                  | Dundalk  | 69                    | 73                    |
| Glyde        | 95                  | Dundalk  | 65                    | 70                    |
| Dee          | 96                  | Dundalk  | 54                    | 57                    |
| Boyne        | 159                 | Drogheda | 698                   | 749                   |
| Mayne        | 165                 | Dublin   | 2                     | 2                     |
| Liffey       | 168                 | Dublin   | 20                    | 21                    |
| Dargle       | 169                 | Dublin   | 12                    | 13                    |
| Vartry       | 170                 | Dublin   | 1                     | 1                     |
| Aughrim      | 171                 | Wexford  | 1                     | 1                     |
| Slaney       | 175                 | Wexford  | 280                   | 303                   |
| Sow          | 178                 | Wexford  | 7                     | 7                     |

Table 23. Number of salmon caught by rod & line in the Eastern Regional Fisheries Board area in 2005 as determined from angling logbook returns. The table shows the reported tagged fish and the adjusted catch to take into account those fish captured for which no logbook was returned. The method for adjusting the reported catch follows investigations published by Small (1991). River names and codes are defined by the Ordnance Survey of Ireland, Rivers and their Catchment Basins, 1958.

| River System  | River System Number | District | Reported Sea Trout Catch | Adjusted Sea Trout Catch |
|---------------|---------------------|----------|--------------------------|--------------------------|
| Castletown    | 92                  | Dundalk  | 4                        | 4                        |
| Glyde         | 95                  | Dundalk  | 3                        | 3                        |
| Dee           | 96                  | Dundalk  | 7                        | 7                        |
| Boyne         | 159                 | Drogheda | 20                       | 21                       |
| Ward          | 164                 | Dublin   | 1                        | 1                        |
| Dargle        | 169                 | Dublin   | 16                       | 17                       |
| Vartry        | 170                 | Dublin   | 7                        | 7                        |
| Ovoca         | 171                 | Wexford  | 1                        | 1                        |
| Slaney        | 175                 | Wexford  | 17                       | 18                       |
| Owenavorrhagh | 177                 | Wexford  | 4                        | 4                        |

Table 24. Number of sea trout (over 40 cm) caught by rod & line in the Eastern Regional Fisheries Board area in 2005 as determined from angling logbook returns. The table shows the reported tagged fish and the adjusted catch to take into account those fish captured for which no logbook was returned. The method for adjusting the reported catch follows investigations published by Small (1991). River names and codes are defined by the Ordnance Survey of Ireland, Rivers and their Catchment Basins, 1958.

## Angling Catch by River System – Southern Regional Fisheries Board

| River System         | River System Number | District  | Reported Salmon Catch | Adjusted Salmon Catch |
|----------------------|---------------------|-----------|-----------------------|-----------------------|
| Owenduff (Waterford) | 181                 | Waterford | 4                     | 4                     |
| Suir                 | 182                 | Waterford | 836                   | 954                   |
| Barrow               | 183                 | Waterford | 166                   | 189                   |
| Nore                 | 184                 | Waterford | 520                   | 593                   |
| Mahon                | 185                 | Waterford | 1                     | 1                     |
| Colligan             | 188                 | Waterford | 11                    | 13                    |
| Bannow Bay           | 242                 | Waterford | 1                     | 1                     |
| Blackwater (Munster) | 190                 | Lismore   | 1518                  | 1743                  |

Table 25. Number of salmon caught by rod & line in the Southern Regional Fisheries Board area in 2005 as determined from angling logbook returns. The table shows the reported tagged fish and the adjusted catch to take into account those fish captured for which no logbook was returned. The method for adjusting the reported catch follows investigations published by Small (1991). River names and codes are defined by the Ordnance Survey of Ireland, Rivers and their Catchment Basins, 1958.

| River System         | River System Number | District  | Reported Sea Trout Catch | Adjusted Sea Trout Catch |
|----------------------|---------------------|-----------|--------------------------|--------------------------|
| Nore                 | 184                 | Waterford | 4                        | 4                        |
| Tay                  | 186                 | Waterford | 4                        | 5                        |
| Colligan             | 188                 | Waterford | 9                        | 10                       |
| Blackwater (Munster) | 190                 | Lismore   | 15                       | 17                       |


Table 26. Number of sea trout (over 40 cm) caught by rod & line in the Southern Regional Fisheries Board area in 2005 as determined from angling logbook returns. The table shows the reported tagged fish and the adjusted catch to take into account those fish captured for which no logbook was returned. The method for adjusting the reported catch follows investigations published by Small (1991). River names and codes are defined by the Ordnance Survey of Ireland, Rivers and their Catchment Basins, 1958.



## Angling Catch by River System – South Western Regional Fisheries Board

| River System       | River System Number | District | Reported Salmon Catch | Adjusted Salmon Catch |
|--------------------|---------------------|----------|-----------------------|-----------------------|
| Glengarriff        | 219                 | Cork     | 4                     | 5                     |
| Coomhola           | 225                 | Cork     | 17                    | 20                    |
| Owvane             | 226                 | Cork     | 9                     | 11                    |
| Mealagh            | 227                 | Cork     | 22                    | 26                    |
| Lee (Cork)         | 228                 | Cork     | 419                   | 492                   |
| Bandon             | 229                 | Cork     | 375                   | 440                   |
| Owenboy            | 230                 | Cork     | 1                     | 1                     |
| Argideen           | 232                 | Cork     | 4                     | 4                     |
| Ilen               | 233                 | Cork     | 60                    | 71                    |
| Cork District      | 259                 | Cork     | 39                    | 46                    |
| Maine              | 197                 | Kerry    | 21                    | 25                    |
| Owenascaul         | 200                 | Kerry    | 1                     | 1                     |
| Owenmore (Brandon) | 203                 | Kerry    | 5                     | 6                     |
| Laune              | 207                 | Kerry    | 547                   | 638                   |
| Caragh             | 208                 | Kerry    | 106                   | 125                   |
| Ferta              | 210                 | Kerry    | 4                     | 5                     |
| Inny (Knockmoyle)  | 212                 | Kerry    | 45                    | 53                    |
| Currane/Waterville | 213                 | Kerry    | 146                   | 170                   |
| Sneem              | 214                 | Kerry    | 21                    | 25                    |
| Blackwater (Kerry) | 215                 | Kerry    | 82                    | 94                    |
| Roughy             | 217                 | Kerry    | 158                   | 189                   |
| Sheen              | 218                 | Kerry    | 32                    | 36                    |
| Clonee             | 220                 | Kerry    | 1                     | 1                     |
| Owenshagh          | 221                 | Kerry    | 5                     | 6                     |
| Glanmore R. and L. | 222                 | Kerry    | 15                    | 19                    |
| Kerry District     | 260                 | Kerry    | 122                   | 144                   |

Table 27. Number of salmon caught by rod & line in the South Western Regional Fisheries Board area in 2005 as determined from angling logbook returns. The table shows the reported tagged fish and the adjusted catch to take into account those fish captured for which no logbook was returned. The method for adjusting the reported catch follows investigations published by Small (1991). River names and codes are defined by the Ordnance Survey of Ireland, *Rivers and their Catchment Basins*, 1958.



| River System       | River System Number | District | Reported Sea Trout Catch | Adjusted Sea Trout Catch |
|--------------------|---------------------|----------|--------------------------|--------------------------|
| Owennacurra        | 192                 | Cork     | 1                        | 1                        |
| Glashaboy          | 193                 | Cork     | 7                        | 8                        |
| Mealagh            | 227                 | Cork     | 1                        | 1                        |
| Lee(Cork)          | 228                 | Cork     | 3                        | 4                        |
| Bandon             | 229                 | Cork     | 7                        | 8                        |
| Argideen           | 232                 | Cork     | 4                        | 5                        |
| Ilen               | 233                 | Cork     | 10                       | 12                       |
| Cork District      | 259                 | Cork     | 6                        | 7                        |
| Maine              | 197                 | Kerry    | 1                        | 1                        |
| Owencashla         | 199                 | Kerry    | 1                        | 1                        |
| Owenmore (Brandon) | 203                 | Kerry    | 2                        | 2                        |
| Laune              | 207                 | Kerry    | 9                        | 10                       |
| Caragh             | 208                 | Kerry    | 2                        | 2                        |
| Behy               | 209                 | Kerry    | 3                        | 4                        |
| Ferta              | 210                 | Kerry    | 1                        | 1                        |
| Currane/Waterville | 213                 | Kerry    | 246                      | 290                      |
| Blackwater (Kerry) | 215                 | Kerry    | 2                        | 2                        |
| Roughy             | 217                 | Kerry    | 10                       | 12                       |
| Owenshagh          | 221                 | Kerry    | 2                        | 2                        |
| Kerry District     | 260                 | Kerry    | 14                       | 17                       |

Table 28. Number of sea trout (over 40 cm) caught by rod & line in the South Western Regional Fisheries Board area in 2005 as determined from angling logbook returns. The table shows the reported tagged fish and the adjusted catch to take into account those fish captured for which no logbook was returned. The method for adjusting the reported catch follows investigations published by Small (1991). River names and codes are defined by the Ordnance Survey of Ireland, Rivers and their Catchment Basins, 1958.



## Angling Catch by River System – Shannon Regional Fisheries Board

| River System   | River System Number | District | Reported Salmon Catch | Adjusted Salmon Catch |
|----------------|---------------------|----------|-----------------------|-----------------------|
| Inagh          | 149                 | Limerick | 2                     | 2                     |
| Doonbeg        | 154                 | Limerick | 4                     | 4                     |
| Shannon        | 155                 | Limerick | 288                   | 298                   |
| Derravaragh L. | 157                 | Limerick | 1                     | 1                     |
| Fergus         | 158                 | Limerick | 46                    | 48                    |
| Feale          | 194                 | Limerick | 906                   | 947                   |

Table 29. Number of salmon caught by rod & line in the Shannon Regional Fisheries Board area in 2005 as determined from angling logbook returns. The table shows the reported tagged fish and the adjusted catch to take into account those fish captured for which no logbook was returned. The method for adjusting the reported catch follows investigations published by Small (1991). River names and codes are defined by the Ordnance Survey of Ireland, Rivers and their Catchment Basins, 1958.

| River System | River System Number | District | Reported Sea Trout Catch | Adjusted Sea Trout Catch |
|--------------|---------------------|----------|--------------------------|--------------------------|
| Doonbeg      | 154                 | Limerick | 2                        | 2                        |
| Shannon      | 155                 | Limerick | 2                        | 2                        |
| Inch         | 158                 | Limerick | 13                       | 17                       |
| Feale        | 194                 | Limerick | 23                       | 23                       |

Table 30. Number of sea trout (over 40 cm) caught by rod & line in the Shannon Regional Fisheries Board area in 2005 as determined from angling logbook returns. The table shows the reported tagged fish and the adjusted catch to take into account those fish captured for which no logbook was returned. The method for adjusting the reported catch follows investigations published by Small (1991). River names and codes are defined by the Ordnance Survey of Ireland, Rivers and their Catchment Basins, 1958.

### Angling Catch by River System – Western Regional Fisheries Board

| River System          | River System Number | District    | Reported Salmon Catch | Adjusted Salmon Catch |
|-----------------------|---------------------|-------------|-----------------------|-----------------------|
| Owenriff              | 140                 | Galway      | 16                    | 18                    |
| Owenboliska (Boliska) | 141                 | Galway      | 2                     | 2                     |
| Corrib                | 143                 | Galway      | 786                   | 900                   |
| Kilcolgan             | 145                 | Galway      | 3                     | 3                     |
| Aille (Galway)        | 148                 | Galway      | 2                     | 2                     |
| Galway District       | 262                 | Galway      | 56                    | 65                    |
| Ballynahinch          | 136                 | Connemara   | 7                     | 8                     |
| Cashla                | 138                 | Connemara   | 17                    | 19                    |
| Screebe R. & L.       | 239                 | Connemara   | 14                    | 15                    |
| Belclare R.           | 126                 | Ballinakill | 9                     | 11                    |
| Bunowen (Clew Bay)    | 127                 | Ballinakill | 32                    | 36                    |
| Carrownisky           | 128                 | Ballinakill | 9                     | 10                    |
| Bundorragha           | 130                 | Ballinakill | 139                   | 162                   |
| Erriff                | 131                 | Ballinakill | 143                   | 166                   |
| Culfin                | 132                 | Ballinakill | 8                     | 9                     |
| Dawros                | 133                 | Ballinakill | 42                    | 49                    |
| Owenglin              | 135                 | Ballinakill | 78                    | 91                    |

Table 31. Number of salmon caught by rod & line in the Western Regional Fisheries Board area in 2005 as determined from angling logbook returns. The table shows the reported tagged fish and the adjusted catch to take into account those fish captured for which no logbook was returned. The method for adjusting the reported catch follows investigations published by Small (1991). River names and codes are defined by the Ordnance Survey of Ireland, Rivers and their Catchment Basins, 1958.



## Angling Catch by River System – North Western Regional Fisheries Board

| River System           | River System Number | District | Reported Salmon Catch | Adjusted Salmon Catch |
|------------------------|---------------------|----------|-----------------------|-----------------------|
| Glenamoy               | 100                 | Bangor   | 46                    | 59                    |
| Owenmore R.            | 105                 | Bangor   | 433                   | 542                   |
| Owenduff               | 106                 | Bangor   | 193                   | 238                   |
| Burrishoole (Srahmore) | 107                 | Bangor   | 18                    | 22                    |
| Newport R. (Bangor)    | 108                 | Bangor   | 35                    | 43                    |
| Ballinglen             | 102                 | Ballina  | 1                     | 1                     |
| Palmerstown            | 104                 | Ballina  | 16                    | 21                    |
| Moy                    | 110                 | Ballina  | 5,213                 | 6,675                 |
| Easky                  | 114                 | Ballina  | 231                   | 300                   |
| Ballysadare            | 116                 | Sligo    | 972                   | 1,247                 |
| Garvogue               | 117                 | Sligo    | 88                    | 116                   |
| Drumcliff              | 119                 | Sligo    | 41                    | 54                    |
| Sligo District         | 267                 | Sligo    | 1                     | 1                     |

Table 32. Number of salmon caught by rod & line in the North Western Regional Fisheries Board area in 2005 as determined from angling logbook returns. The table shows the reported tagged fish and the adjusted catch to take into account those fish captured for which no logbook was returned. The method for adjusting the reported catch follows investigations published by Small (1991). River names and codes are defined by the Ordnance Survey of Ireland, Rivers and their Catchment Basins, 1958.

| River System           | River System Number | District | Reported Sea Trout Catch | Adjusted Sea Trout Catch |
|------------------------|---------------------|----------|--------------------------|--------------------------|
| Glenamoy               | 100                 | Bangor   | 1                        | 1                        |
| Owenmore R.            | 105                 | Bangor   | 3                        | 3                        |
| Owenduff               | 106                 | Bangor   | 19                       | 23                       |
| Cloonalaghan           | 103                 | Ballina  | 3                        | 4                        |
| Palmerstown            | 104                 | Ballina  | 5                        | 7                        |
| Moy                    | 110                 | Ballina  | 29                       | 36                       |
| Easky                  | 114                 | Ballina  | 4                        | 6                        |
| Ballysadare            | 116                 | Sligo    | 8                        | 8                        |
| Glencar L. & Drumcliff | 119                 | Sligo    | 3                        | 4                        |
| Mullaghmore            | 249                 | Sligo    | 1                        | 1                        |
| Rosses Point (Sligo)   | 250                 | Sligo    | 6                        | 8                        |

Table 33. Number of sea trout (over 40 cm) caught by rod & line in the North Western Regional Fisheries Board area in 2005 as determined from angling logbook returns. The table shows the reported tagged fish and the adjusted catch to take into account those fish captured for which no logbook was returned. The method for adjusting the reported catch follows investigations published by Small (1991). River names and codes are defined by the Ordnance Survey of Ireland, Rivers and their Catchment Basins, 1958.

### Angling Catch by River System – Northern Regional Fisheries Board

| River System         | River System Number | District     | Reported Salmon Catch | Adjusted Salmon Catch |
|----------------------|---------------------|--------------|-----------------------|-----------------------|
| Glen                 | 52                  | Ballyshannon | 75                    | 95                    |
| Bungosteen           | 54                  | Ballyshannon | 1                     | 1                     |
| Oily                 | 55                  | Ballyshannon | 2                     | 2                     |
| Eany Water           | 57                  | Ballyshannon | 233                   | 302                   |
| Eask L. (Eske)       | 58                  | Ballyshannon | 57                    | 75                    |
| Duff                 | 120                 | Ballyshannon | 177                   | 230                   |
| Drowes               | 121                 | Ballyshannon | 551                   | 714                   |
| Erne                 | 123                 | Ballyshannon | 36                    | 46                    |
| Ray                  | 3                   | Letterkenny  | 13                    | 17                    |
| Owenerk              | 8                   | Letterkenny  | 1                     | 1                     |
| Crana                | 9                   | Letterkenny  | 155                   | 202                   |
| Carey                | 18                  | Letterkenny  | 3                     | 3                     |
| Crolly R.            | 22                  | Letterkenny  | 22                    | 27                    |
| Clady                | 23                  | Letterkenny  | 54                    | 70                    |
| Tullaghobegly        | 24                  | Letterkenny  | 36                    | 47                    |
| Lackagh              | 27                  | Letterkenny  | 48                    | 61                    |
| Leannan              | 31                  | Letterkenny  | 41                    | 53                    |
| Owenamarve           | 47                  | Letterkenny  | 4                     | 4                     |
| Gweebarra            | 48                  | Letterkenny  | 67                    | 88                    |
| Owenea               | 50                  | Letterkenny  | 263                   | 340                   |
| Swilly               | 51                  | Letterkenny  | 3                     | 4                     |
| Owentucker           | 56                  | Letterkenny  | 1                     | 1                     |
| Glennagannon R.      | 271                 | Letterkenny  | 3                     | 4                     |
| Letterkenny District | 269                 | Letterkenny  | 1                     | 1                     |

Table 34. Number of salmon caught by rod & line in the Northern Regional Fisheries Board area in 2005 as determined from angling logbook returns. The table shows the reported tagged fish and the adjusted catch to take into account those fish captured for which no logbook was returned. The method for adjusting the reported catch follows investigations published by Small (1991). River names and codes are defined by the Ordnance Survey of Ireland, Rivers and their Catchment Basins, 1958.

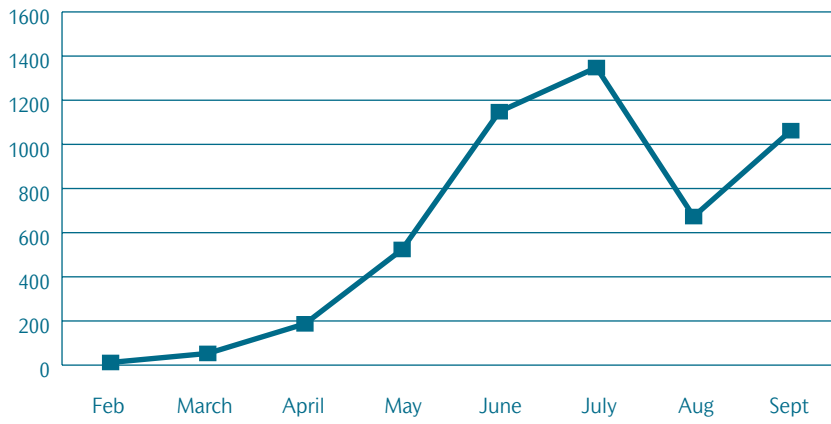


| River System         | River System Number | District     | Reported Sea Trout Catch | Adjusted Sea Trout Catch |
|----------------------|---------------------|--------------|--------------------------|--------------------------|
| Glen                 | 52                  | Ballyshannon | 1                        | 1                        |
| Bungosteen           | 54                  | Ballyshannon | 2                        | 3                        |
| Eany Water           | 57                  | Ballyshannon | 1                        | 1                        |
| Eask (Eske)          | 58                  | Ballyshannon | 8                        | 10                       |
| Drowes               | 121                 | Ballyshannon | 1                        | 1                        |
| Erne                 | 123                 | Ballyshannon | 34                       | 45                       |
| Crana                | 9                   | Letterkenny  | 2                        | 3                        |
| Crolly R.            | 22                  | Letterkenny  | 2                        | 3                        |
| Lackagh              | 27                  | Letterkenny  | 4                        | 5                        |
| Gweebarra            | 48                  | Letterkenny  | 4                        | 5                        |
| Owenea               | 50                  | Letterkenny  | 2                        | 3                        |
| Ballyness Bay        | 240                 | Letterkenny  | 2                        | 2                        |
| Lagg Beach           | 247                 | Letterkenny  | 5                        | 7                        |
| Letterkenny District | 269                 | Letterkenny  | 8                        | 10                       |
| Glennagannon R.      | 271                 | Letterkenny  | 1                        | 1                        |

*Table 35. Number of sea trout (over 40 cm) caught by rod & line in the Northern Regional Fisheries Board area in 2005 as determined from angling logbook returns. The table shows the reported tagged fish and the adjusted catch to take into account those fish captured for which no logbook was returned. The method for adjusting the reported catch follows investigations published by Small (1991). River names and codes are defined by the Ordnance Survey of Ireland, Rivers and their Catchment Basins, 1958.*



**(a) Moy 2005 Reported Angling Catch by Month**



**(b) Moy 2005 Capture Method**

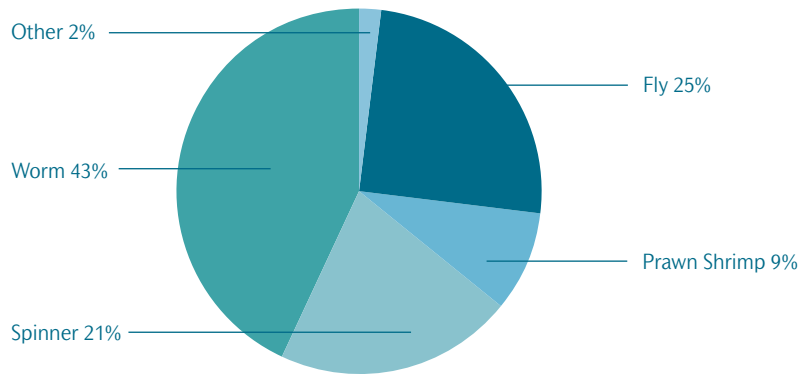
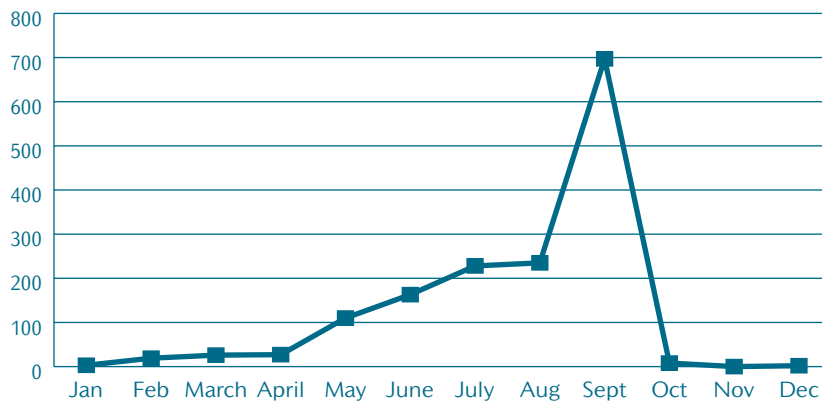


Fig. 7 (a) Reported salmon angling catch by month on the Moy River system in 2005; (b) Capture Method.



### (a) Blackwater (Munster) 2005 Reported Angling Catch



### (b) Blackwater (Munster) 2005 Capture Method

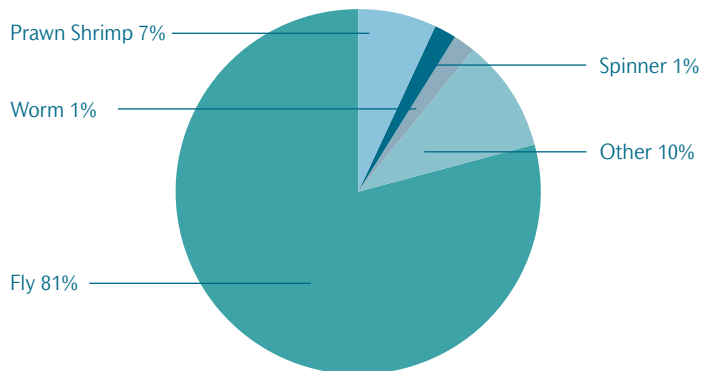
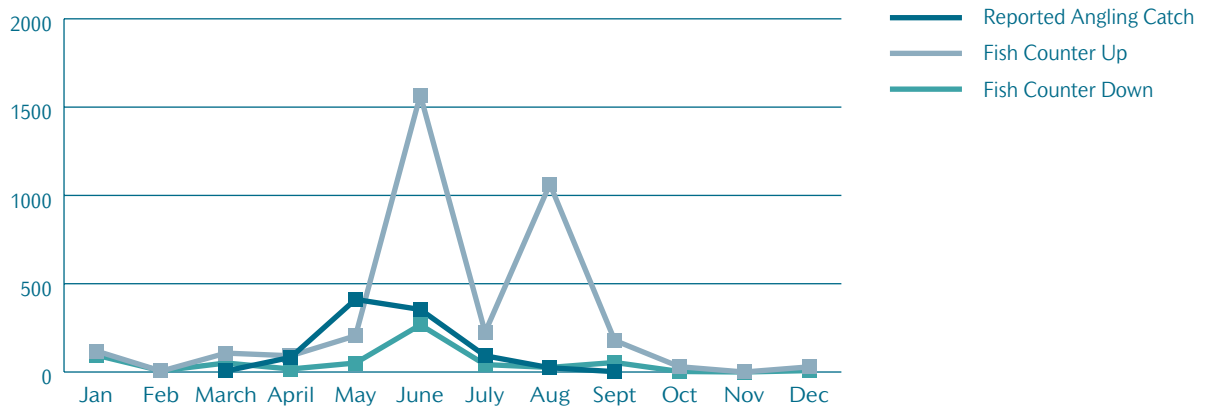


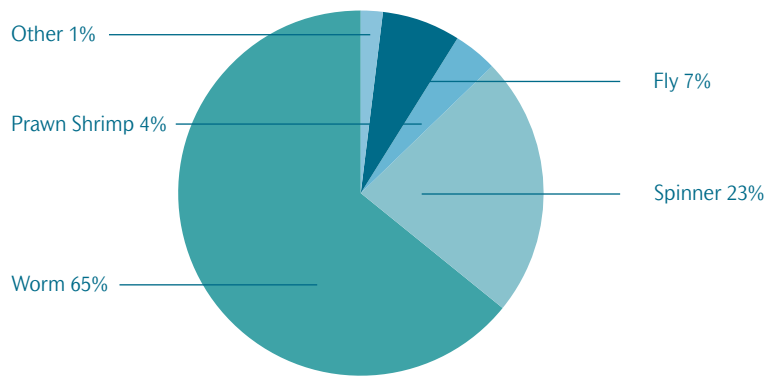
Fig. 8 (a) Reported salmon angling catch by month on the Blackwater (Munster) in 2005; (b) Capture Method.



**(a) Ballysadare 2005 Reported Angling Catch & Fish Counter Data**



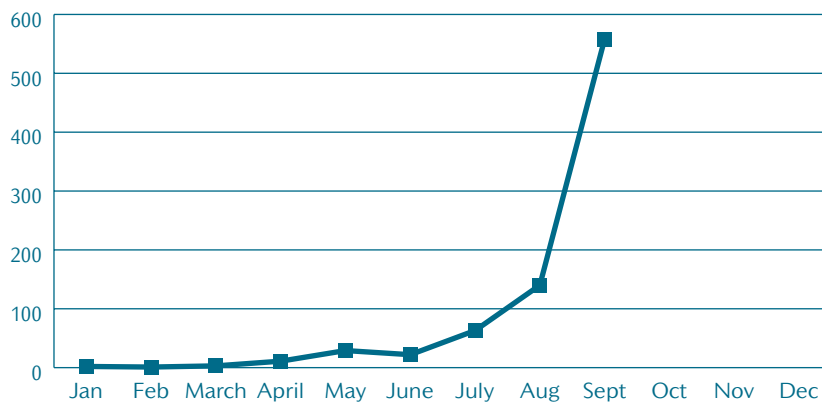
**(b) Ballysadare 2005 Capture Method**



*Fig. 9 (a) Reported salmon angling catch by month on the Ballysadare in 2005. Also shown are Marine Institute fish counter data; (b) Capture Method.*



### (a) Suir 2005 Reported Angling Catch



### (b) Suir 2005 Capture Method

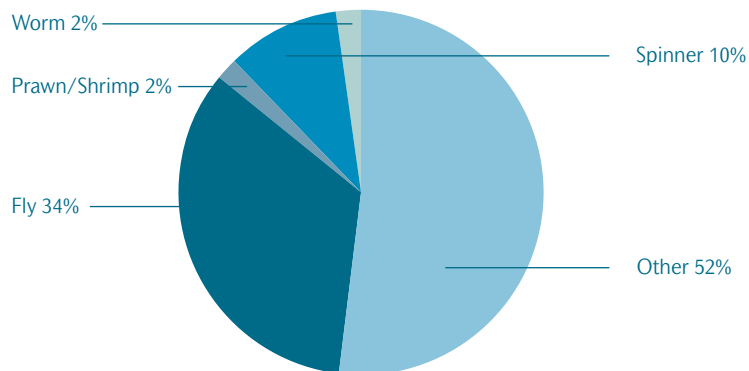
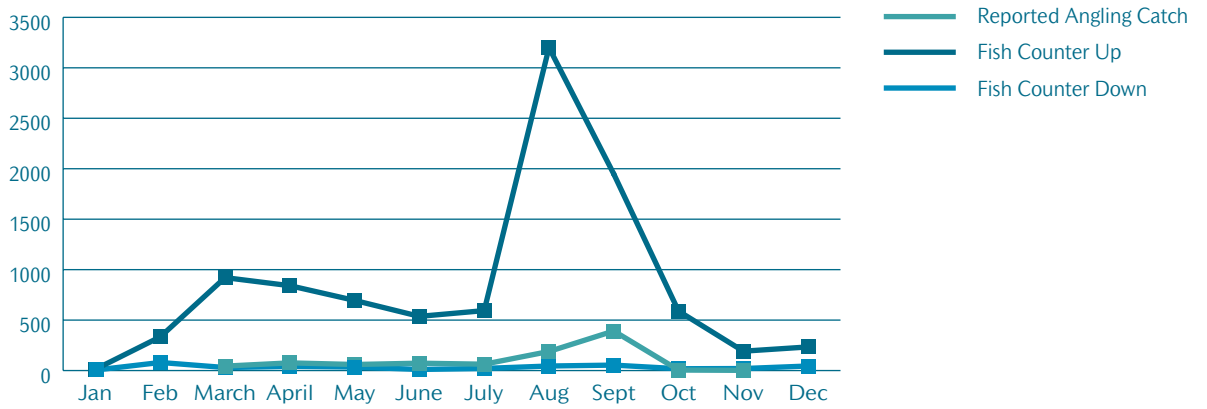


Fig. 10 (a) Reported salmon angling catch by month on the Suir in 2005; (b) Capture Method.



**(a) Feale Reported Angling Catch by Month**



**(b) Feale 2005 Capture Method**

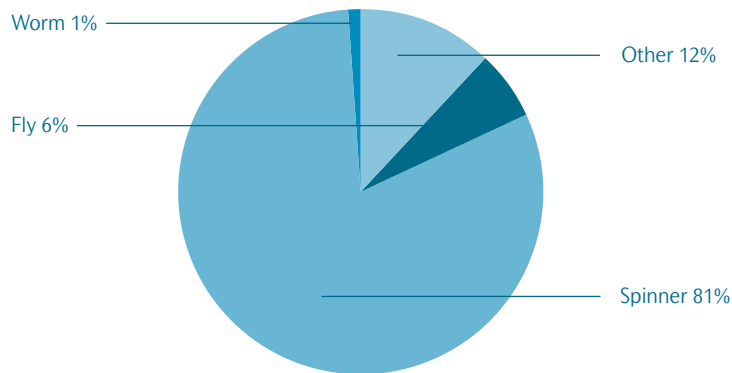


Fig. 11 (a) Reported salmon angling catch by month on the Feale in 2005. Also shown are Marine Institute fish counter data; (b) Capture Method.



