

Average National Figures Per Angler (Jan - Dec 25)

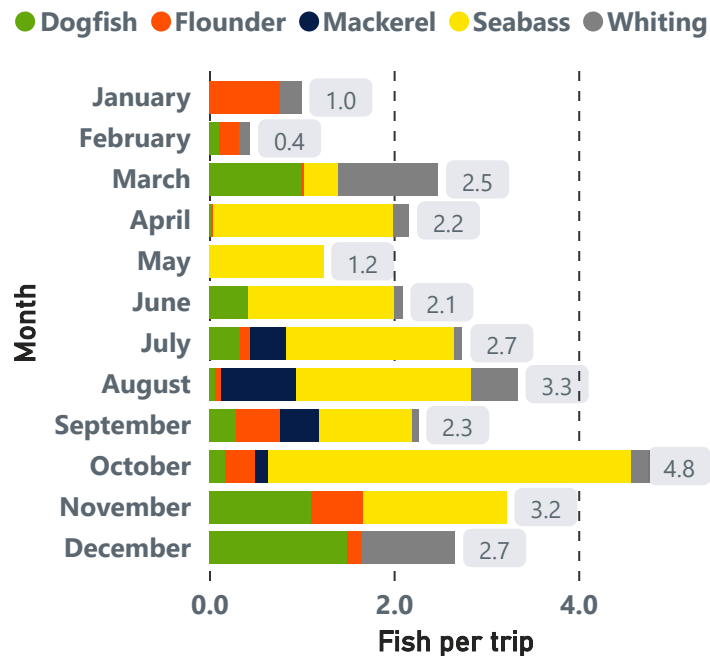
20
Trips

3
Hours/Session

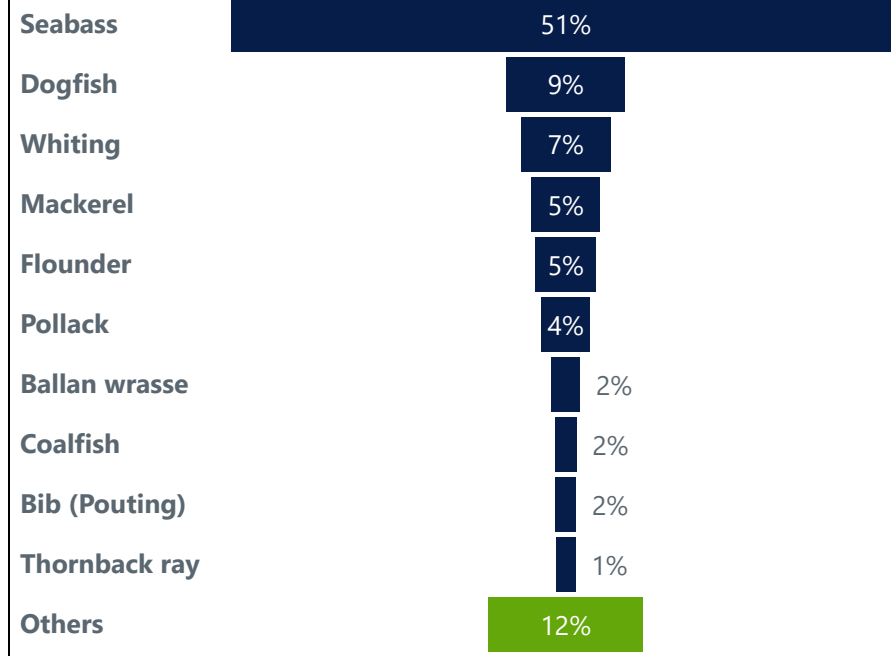
7
Species

3
Fish/Trip

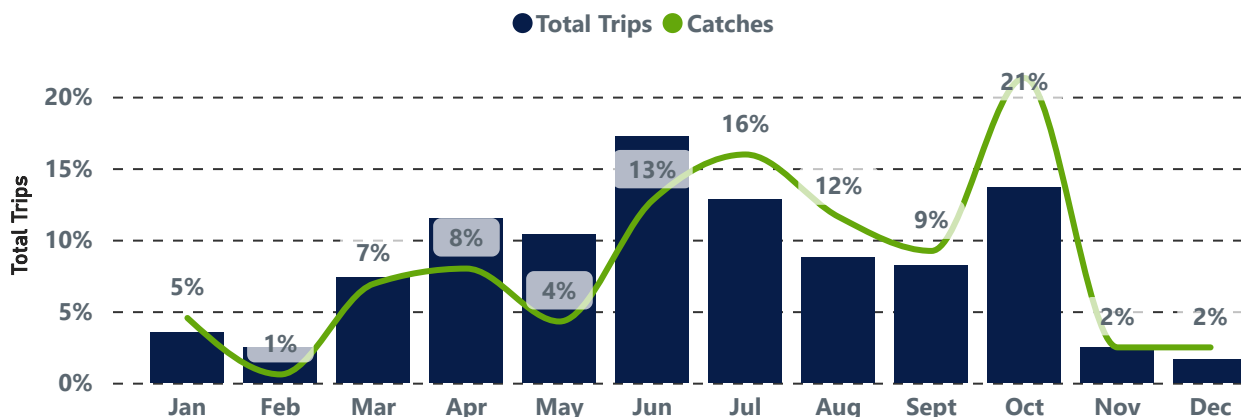
Monthly Catch Trend - Top 5 Species



Top 10 Most Caught Species



Total Trips (Jan - Dec 25)



This is a summary of IMREC Diary Catch Data between Jan - Dec 25.

We would like to sincerely thank all IMREC Diarists for contributing to this project.

For more information on the IMREC project, visit:

<https://imrec-ifigeo.hub.arcgis.com/>