



Iascach Intíre Éireann  
Inland Fisheries Ireland

# Fish Kill in Mallow, Co. Cork

## Report

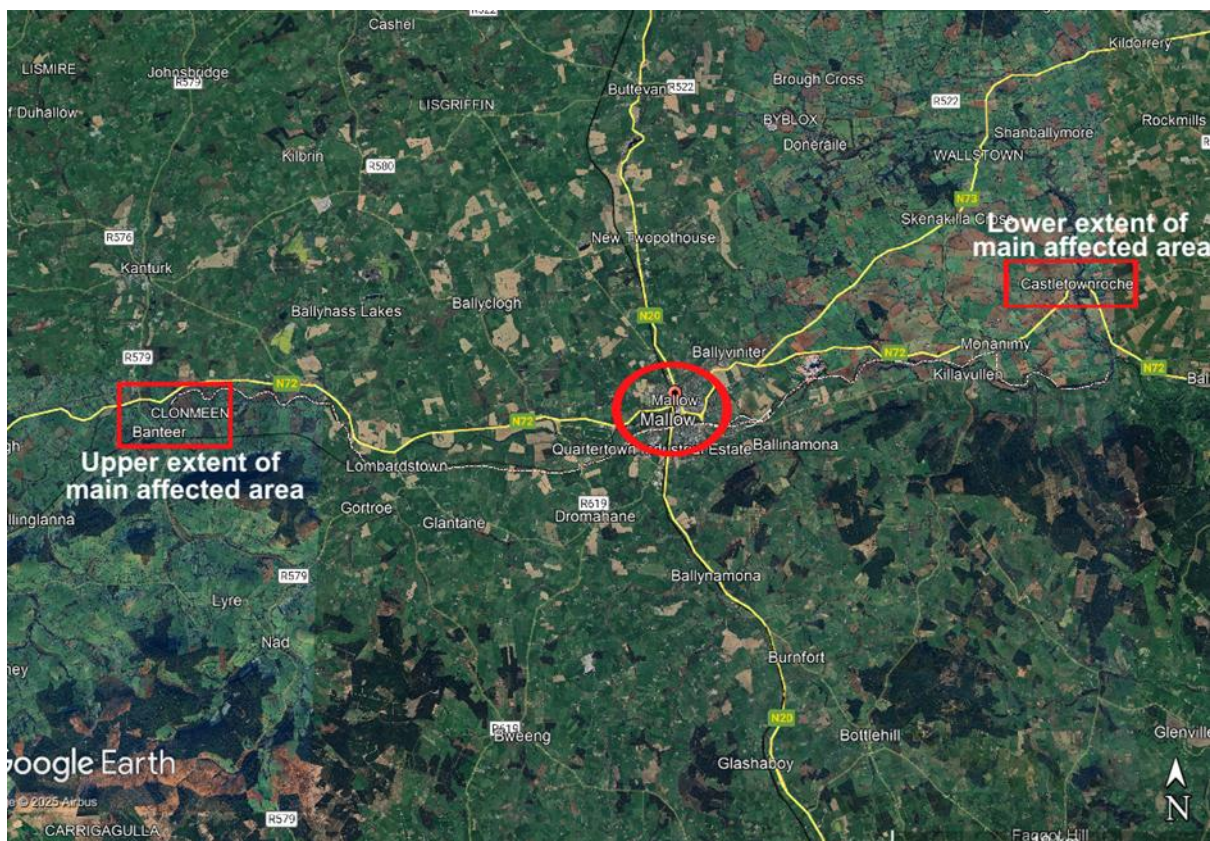
**03 September 2025**

<b>Description of Content:</b>	Report – Fish Kill, Mallow, Co. Cork
<b>Date:</b>	03 September 2025

**Date of Reports:** Inland Fisheries Ireland Fisheries Officers investigated reports of dead and ailing trout in the Munster Blackwater on **Monday 11<sup>th</sup>** August at locations upstream of Mallow. IFI understand that the first sightings were on **Saturday 9<sup>th</sup>** August due to reports received from the public following initial media reporting.

**Incident Location:** Affected trout were observed in the Blackwater over a 40km stretch from Banteer Bridge to Castletownroche downstream of Mallow. Mortalities and affected fish were also found in the Clyda River (near Lombardstown).

### Map of section of Munster Blackwater



Approximate length of Munster Blackwater main river channel in which mortalities and marked fish have been observed to date is 40kms, between Banteer (upstream) and Castletownroche (downstream).

**Findings - Numbers:** IFI estimated between 8,000 and 10,000 mortalities, primarily trout. This is based on IFI visual observations and data provided by local stakeholders. Scientific estimates of numbers will be completed shortly.

### IFI Activity

**August 11<sup>th</sup> to date :** On location since **August 11<sup>th</sup>**, IFI staff ( Lismore Fishery District Team) continue to inspect the affected stretches of river in order to assess the potential extent and scale of the

incident and to locate a possible cause of the fish kill. Ongoing interactions with stakeholders and interagency colleagues.

IFI consulted with **Uisce Éireann**, the **EPA** and **Cork County Council** staff at the location following the initial investigation throughout **11-12<sup>th</sup> August**. No evidence of a polluting or deleterious discharge has been detected to date. The Marine Institute Fish Health Unit (the Competent Authority for fish health in Ireland) conducted diagnostic pathology sampling at the request of IFI on site **14<sup>th</sup> August** at Mallow which 'suggests possible exposure to some form of environmental insult or water borne irritant, is widespread and largely chronic ' (final results provided on **August 28<sup>th</sup>**). Marine Institute evidence pointed to the event having taken place in advance of the first reports on August 11<sup>th</sup>, and subsequent reports on August 9<sup>th</sup>. Macroinvertebrate sampling ongoing.

**August 25<sup>th</sup>** Specimens provided to Eurofins for residue sampling. ( Broad suite of analysis for heavy metals and 900 pesticides to be completed – results expected **September 10<sup>th</sup>**.)

**August 28<sup>th</sup>** Responded to credible report to An Garda Síochána (AGS) of suspicious activity at Roskeen Bridge. AGS have found no evidence of criminal activity ( **Sept 3<sup>rd</sup>**).

**August 29<sup>th</sup>**. Further samples provided to Eurofins for residue sampling. Data received from EPA for comment. IFI deployed additional teams from Research and Operations (>7 staff) to undertake a limited electrofishing survey at Roskeen. Multiple fish species were recorded in the area, including salmon and trout. Nothing of note found.

## **EPA Activity**

When the EPA became aware of reports of a serious fish kill in the River Blackwater and the River Clyda around the Mallow area of County Cork, it immediately deployed three teams of inspectors to investigate whether industrial sites licensed by the EPA, as well as wastewater treatment plants and drinking water plants around Mallow and Kanturk, may have contributed to the serious incident. Inspectors checked conditions on the ground and took effluent and water samples. No spills were detected on any site inspected.

When the preliminary findings of fish pathology studies carried out by the Marine Institute were reported on the **22<sup>nd</sup> August**, indicating that a waterborne irritant was likely to have caused or contributed to the fish mortalities, and that exposure may have occurred in the days before the **11<sup>th</sup> August**. As a consequence, the EPA expanded their investigation to include discharges from EPA-regulated sites that may have occurred over a wider date range in the Blackwater Catchment.

In total, the EPA focused their investigation on the following EPA regulated facilities in the Blackwater catchment:

- 10 licensed industrial sites
- 17 wastewater discharges (eight of which hold wastewater discharge licences and nine which hold certificates of authorisation)
- Two drinking water plants that use chemicals for coagulation and flocculation

As part of the expanded investigation, the EPA continues to carry out further inspections, including an assessment of monitoring data on regulated facilities in this area.

A number of licensed sites were not in compliance with certain licence conditions during the period, which are the subject of separate enforcement actions. However, to date, the EPA has not identified a causal link between discharges from the EPA-regulated facilities and the fish kill. This information is being made available to the inter-agency group coordinating the investigation into the incident, and to Inland Fisheries Ireland (IFI) to inform their assessment in relation to the fish kill.

**Uisce Éireann** were satisfied on **August 12<sup>th</sup>** that there was no water quality issues in relation to the supply at Mallow Water Treatment Plant ( on the Clyda River).

### **Cork Co. Co. Activity**

Attended site on **August 11<sup>th</sup>**. Work ongoing since **September 3<sup>rd</sup>** including wider catchment assessment to ascertain scale of impacted area, macroinvertebrate sampling of several sites, in joint IFI/Cork County Council agreed programme. [REDACTED]

[REDACTED] Incident not linked to fish kill. Investigated reports of suspicious discharges on an interagency basis. Ongoing inspections of local authority regulated activities and other commercial activities.

### **Stakeholder and Interagency Meetings**

**August 22<sup>nd</sup>** Stakeholder meeting with Stakeholders in Mallow hosted by IFI and chaired by Minister Dooley

**August 25<sup>th</sup>** Inter-agency meeting 1.

**August 28 and 29<sup>th</sup>** : Marine Institute, Cork Co Co and EPA results provided to IFI were published on IFIs website.

**September 1<sup>st</sup>**, Interagency meeting 2

**September 3<sup>rd</sup>**, Interagency meeting 3 – chaired by Minister Dooley.

### **Media relations and communications**

Press statements and media responses have issued from all three agencies since August 12<sup>th</sup> .