

# Fish in Rivers Factsheet

SWRBD

Funshion River Catchment

Factsheet: 2017/22

The Funshion River Catchment is located in the South Western River Basin District and covers an area of approximately 382km<sup>2</sup>. The Funshion River flows south westwards, looping back in an easterly direction, to join the River Blackwater (Munster) near Fermoy, Co. Cork. The geology of this catchment is mainly sandstone and limestone, with agriculture the primary land use type. Portions of this catchment's headwaters are located within two special areas of

conservation (SAC's), the Ballyhoura Mountains SAC to the west and the Galtee Mountains SAC to the east. At the lower end of this catchment, the Funshion River's confluence with the River Blackwater forms part of the River Blackwater (Cork/Waterford) SAC.

Nine sites were surveyed on the Funshion River catchment between the 28<sup>th</sup> and 29<sup>th</sup> of July 2017.



**The Funshion River at Kilbeheny (Site 2)**

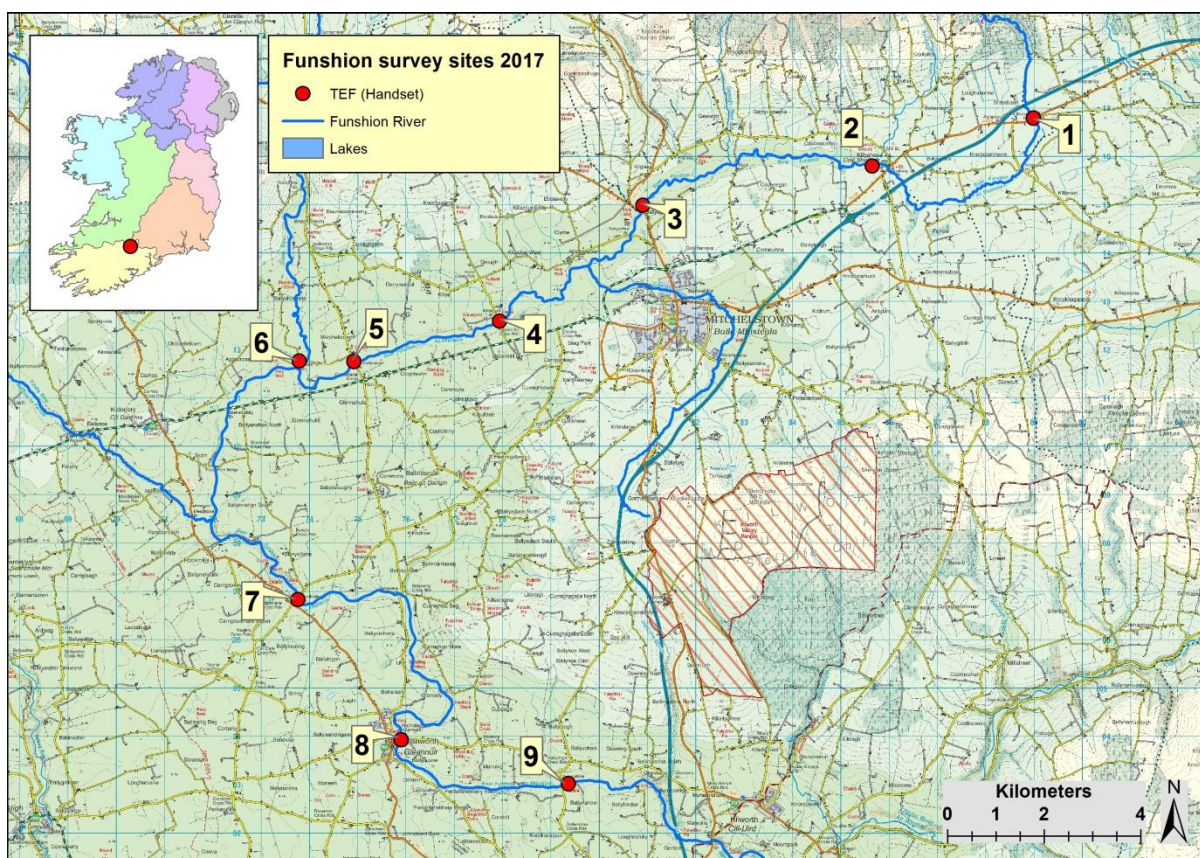


Fig 1. Map of Funshion River Catchment electrofishing survey sites, 2017

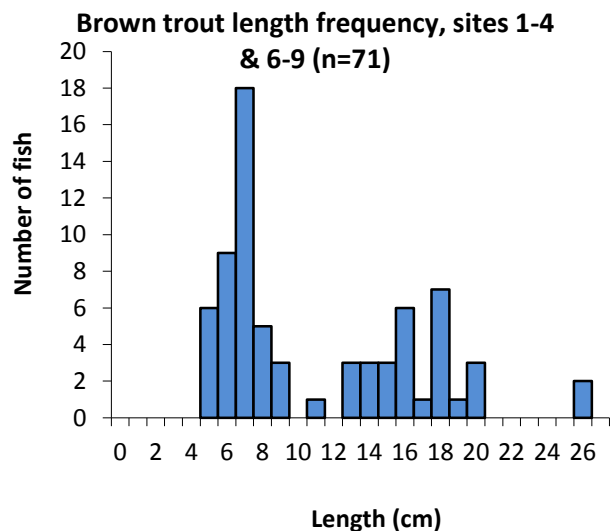
Site survey details, Funshion River Catchment, 2017

No.	River name	Site	Method	WFD	Date
1	Funshion River	Brackbaun Br.	Spot check	Yes	28/08/2017
2	Funshion River	Kilbeheny	TEF (Handset)	-	28/08/2017
3	Funshion River	Ballyaghaderg	Spot check	-	28/08/2017
4	Funshion River	Cloonilla	Spot check	-	28/08/2017
5	Funshion River	Marshalstown Br.	Spot check	-	29/08/2017
6	Funshion River	O'Brien's Br.	Spot check	-	29/08/2017
7	Funshion River	Bealalaboga Br.	Spot check	-	29/08/2017
8	Funshion River	Glanworth	Spot check	-	29/08/2017
9	Funshion River	Ballynahow	Spot check	-	29/08/2017

TEF (Ten-minute electrofishing), Spot check (presence/absence)

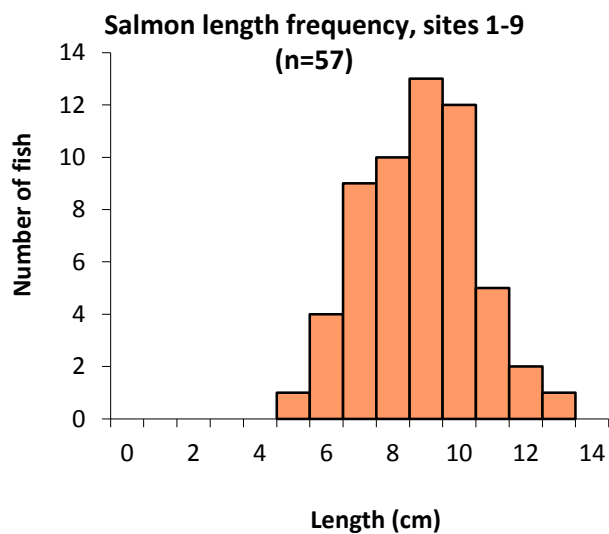
Minimum density estimates (no. fish/m<sup>2</sup>)

Site no.	1	2		3	4
Species	2017	2014	2017	2017	2017
Brown trout	Yes	0.108	0.080	Yes	Yes
0+ brown trout	Yes	0.042	0.080	Yes	-
1+ & older brown trout	Yes	0.066	-	Yes	Yes
Salmon	Yes	0.236	0.006	Yes	Yes
0+ salmon	Yes	0.167	0.006	Yes	Yes
1+ & older salmon	Yes	0.069	-	Yes	Yes
European eel	-	0.003	-	-	-
Lamprey sp.	-	-	-	-	Yes
Stone loach	-	-	-	-	Yes
Three-spined stickleback	-	-	-	-	-
<b>All Fish</b>	<b>Spot</b>	<b>0.347</b>	<b>0.086</b>	<b>Spot</b>	<b>Spot</b>
Site no.	5	6	7	8	9
Species	2017	2017	2017	2017	2017
Brown trout	-	Yes	Yes	Yes	Yes
0+ brown trout	-	Yes	-	Yes	-
1+ & older brown trout	-	Yes	Yes	-	Yes
Salmon	Yes	Yes	Yes	Yes	Yes
0+ salmon	-	Yes	Yes	-	Yes
1+ & older salmon	Yes	Yes	Yes	Yes	Yes
European eel	-	-	-	-	-
Lamprey sp.	Yes	-	-	Yes	Yes
Stone loach	Yes	Yes	Yes	Yes	Yes
Three-spined stickleback	Yes	-	-	Yes	Yes
<b>All Fish</b>	<b>Spot</b>	<b>Spot</b>	<b>Spot</b>	<b>Spot</b>	<b>Spot</b>
<b>Yes- Present (Spot check only)</b>					



**Salmonid age class structure**

Species	Site No.	% of catch			
		0+	1+	2+	3+
Brown trout	1	95	5	-	-
	2	100	-	-	-
	3	71	-	29	-
	4	-	-	55	45
	6	25	50	25	-
	7	-	-	80	20
	8	100	-	-	-
	9	-	50	50	-
	Salmon	1	29	71	-
2		100	-	-	-
3		91	9	-	-
4		67	33	-	-
5		-	100	-	-
6		92	8	-	-
7		29	71	-	-
8		-	100	-	-
9		67	33	-	-



**Fish ecological data, Funshion catchment**

Site No.	2009	2014	2017
1	Good	Good	N/A
2	-	Good	Poor
3	-	-	N/A
4	-	-	N/A
5	-	-	N/A
6	-	-	Moderate
7	-	-	N/A
8	-	-	N/A
9	-	-	N/A

N/A: Qualitative data only

## Summary

Six fish species were recorded at nine sites surveyed on the Funshion River Catchment in 2017. Brown trout and salmon were the most abundant species captured. Four age classes for brown trout (0+, 1+, 2+ and 3+) and two for salmon (0+ and 1+) were present. Two sites (Site 1 and Site 2) were surveyed on previous occasions, with declines in the density of both brown trout and salmon recorded during the most recent surveys.

One site (2) was assigned a fish ecological status of poor and one site (6) was assigned moderate.

**Inland Fisheries Ireland: 3044 Lake Drive, Citywest Business Campus, Dublin, D24 Y265, Ireland**

CITATION: Matson, R., Delanty, K., Gordon, P., O'Briain, R., Garland, D., Cierpal, D., Connor, L., Corcoran, W., Coyne, J., McLoone, P., Morrissey-McCaffrey, E., Brett, T., Ní Dhonnabhain, L. and Kelly, F.L., (2018) Sampling Fish in Rivers 2017 – Funshion, Factsheet No. 22. National Research Survey Programme. Inland Fisheries Ireland.

*The report includes Ordnance Survey Ireland data reproduced under OSI Copyright Permit No. MP 007508. Unauthorised reproduction infringes Ordnance Survey Ireland and Government of Ireland copyright. © Ordnance Survey Ireland, 2018.*