

# Fish in Rivers Factsheet

SHIRBD

Ballintotty & Ollatrim River Catchments

Factsheet: 2017/17

The Ballintotty and Ollatrim River catchments are located within the Shannon International River Basin District on the eastern side of Lough Derg and cover an area of approximately 89km<sup>2</sup> and 31km<sup>2</sup> respectively. The Ollatrim River loops in a north easterly direction before heading west toward Nenagh, Co. Tipperary, where it joins the Nenagh River. The geology of this catchment is mixed, mainly between limestone, sandstone and shale, with agriculture the dominant land use type.

The Ballintotty River flows in a westerly direction, to join the Ollatrim River near Nenagh, Co. Tipperary. The geology of this catchment includes limestone and sandstone, with the primary land use being agriculture.

Five sites were surveyed on the Ballintotty River catchment and ten sites were surveyed on the Ollatrim River catchment between the 21<sup>st</sup> and 23<sup>rd</sup> of August, 2017.



**The Ballintotty River at Considine Bridge (site 15)**

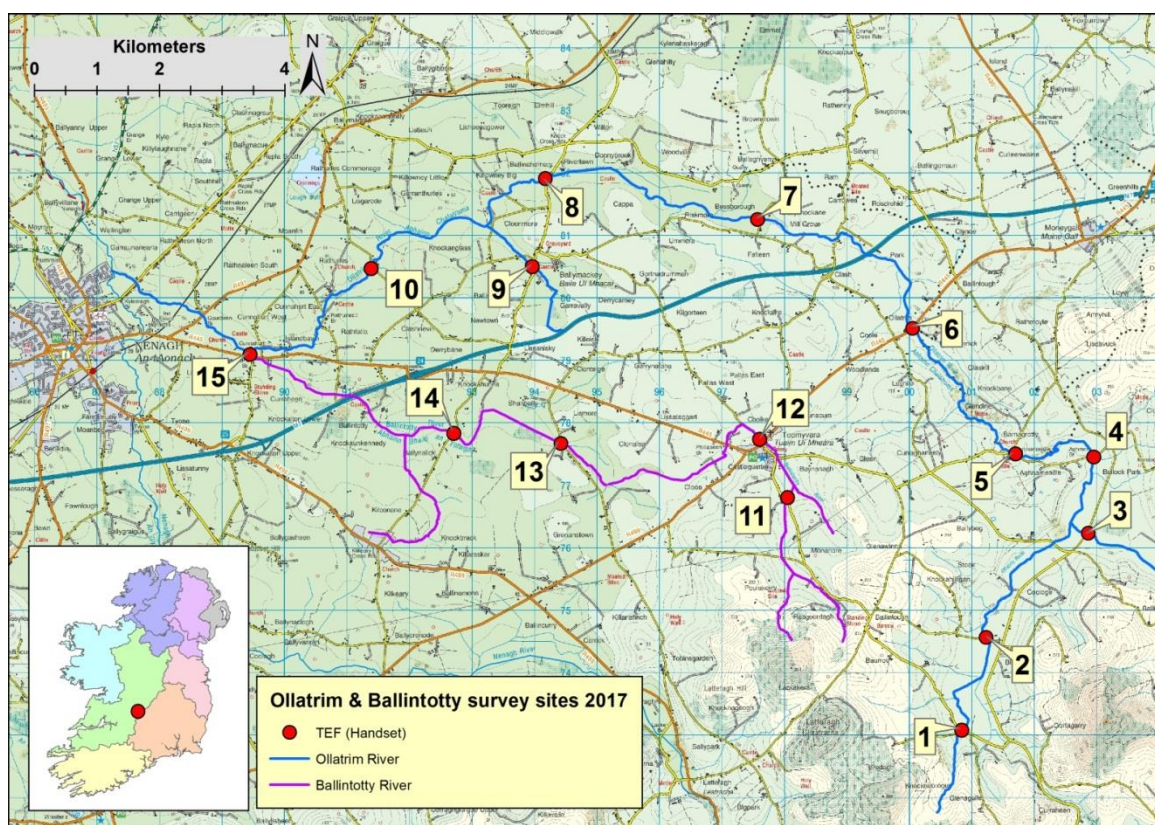


Fig 1. Map of Ballintotty and Ollatrim River catchment electrofishing survey sites, 2017

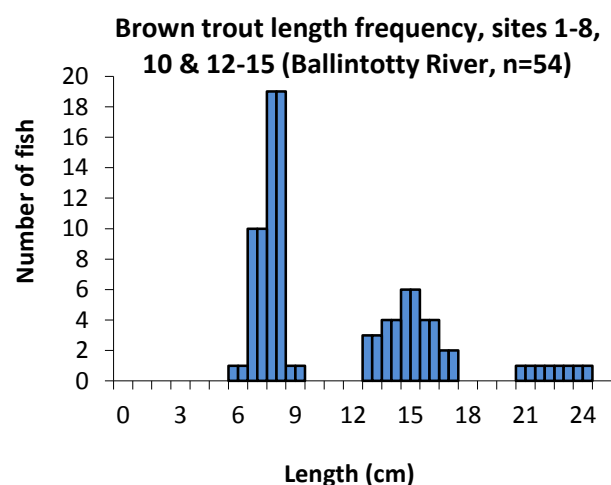
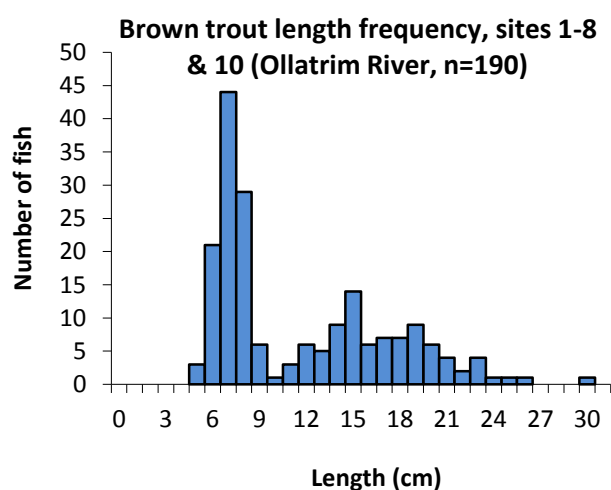
#### Site survey details, Ballintotty and Ollatrim River Catchments, 2017

No.	River name	Site	Method	Date
1	Ollatrim River	Knocknabrogue	TEF (Handset)	21/08/2017
2	Ollatrim River	Blakefield	TEF (Handset)	21/08/2017
3	Borrisnafarney stream	Coologe NE	TEF (Handset)	21/08/2017
4	Ollatrim River	Aghmore Br.	TEF (Handset)	22/08/2017
5	Ollatrim River	Aghnameadle	TEF (Handset)	22/08/2017
6	Ollatrim River	Ollatrim Br.	TEF (Handset)	22/08/2017
7	Ollatrim River	Ballyknockane	TEF (Handset)	22/08/2017
8	Ollatrim River	Ballinahemery	TEF (Handset)	22/08/2017
9	Ollatrim tributary	Ballymackey Castle	TEF (Handset)	21/08/2017
10	Ollatrim River	Raththurles	TEF (Handset)	22/08/2017
11	Ballintotty River	Garrane	TEF (Handset)	23/08/2017
12	Ballintotty River	Toomyvara	TEF (Handset)	23/08/2017
13	Ballintotty River	Coolderry	TEF (Handset)	23/08/2017
14	Ballintotty River	Knockahunna	TEF (Handset)	23/08/2017
15	Ballintotty River	Considine Br.	TEF (Handset)	23/08/2017

TEF (Ten-minute electrofishing)

Minimum density estimates (no. fish/m<sup>2</sup>)

Site no.	1	2	3	4	5	6	7	8
<b>Species</b>	<b>2017</b>	<b>2017</b>	<b>2017</b>	<b>2017</b>	<b>2017</b>	<b>2017</b>	<b>2017</b>	<b>2017</b>
Brown trout	0.277	0.520	0.320	0.351	0.213	0.231	0.055	0.208
0+ brown trout	0.277	0.433	0.302	0.189	0.029	0.115	0.007	0.040
1+ & older brown trout	-	0.087	0.018	0.162	0.184	0.115	0.048	0.168
Lamprey sp.	-	-	0.027	0.016	-	0.038	-	-
Minnow	-	-	0.142	0.210	-	0.044	0.114	0.029
Salmon	-	-	-	-	-	-	0.029	0.007
0+ salmon	-	-	-	-	-	-	0.029	0.007
1+ & older salmon	-	-	-	-	-	-	-	-
Stone loach	-	-	0.178	0.113	0.034	0.126	0.029	0.106
Three-spined stickleback	-	0.060	0.053	0.151	0.010	0.049	-	-
<b>All Fish</b>	<b>0.277</b>	<b>0.580</b>	<b>0.720</b>	<b>0.841</b>	<b>0.257</b>	<b>0.489</b>	<b>0.227</b>	<b>0.351</b>
Site no.	9	10	11	12	13	14	15	
<b>Species</b>	<b>2017</b>	<b>2017</b>	<b>2017</b>	<b>2017</b>	<b>2017</b>	<b>2017</b>	<b>2017</b>	
Brown trout	-	0.140	-	0.188	0.274	0.152	0.202	
0+ brown trout	-	0.022	-	0.188	0.213	0.008	0.170	
1+ & older brown trout	-	0.118	-	-	0.061	0.145	0.032	
Lamprey sp.	-	-	-	-	-	-	0.049	
Minnow	-	0.028	-	-	-	0.008	0.542	
Salmon	-	0.022	-	-	-	-	0.032	
0+ salmon	-	0.011	-	-	-	-	0.032	
1+ & older salmon	-	0.011	-	-	-	-	-	
Stone loach	-	0.062	-	-	0.020	0.008	0.032	
Three-spined stickleback	-	0.017	0.075	0.027	0.061	0.046	0.073	
<b>All Fish</b>	<b>0.000</b>	<b>0.269</b>	<b>0.075</b>	<b>0.215</b>	<b>0.355</b>	<b>0.213</b>	<b>0.931</b>	



**Salmonid age class structure, Ballintotty & Ollatrim catchments, 2017**

Species	Site No.	% of catch			
		0+	1+	2+	3+
<b>Brown trout</b>					
	1	100	-	-	-
	2	85	15	-	-
	3	94	-	-	6
	4	55	19	26	-
	5	14	14	29	43
	6	50	10	35	5
	7	14	-	71	14
	8	19	4	63	15
	10	17	25	33	25
	12	100	-	-	-
	13	77	23	-	-
	14	5	74	21	-
	15	83	17	-	-
<b>Salmon</b>					
	7	100	-	-	-
	8	100	-	-	-
	10	50	50	-	-
	15	100	-	-	-

**Summary**

Six fish species were recorded at fifteen sites surveyed on the Ballintotty and Ollatrim River catchments in 2017. Brown trout were the dominant species at 11 sites and minnow were dominant at sites 7 and 15. No fish were recorded at site 9, while three-spined stickleback were the only species recorded at site 11.

Brown trout were also the most abundant species captured and were found at 13 sites; salmon were recorded at only four sites. Four age classes of brown trout (0+, 1+, 2+ and 3+) and two for salmon (0+ and 1+) were encountered.

Two sites (9 & 11) were assigned a fish ecological status of bad. One site (7) was assigned poor status. Ten sites (1, 3, 5-6, 8, 10 and 12-15) were assigned moderate and two sites were assigned good fish status.

**Fish ecological status, Ballintotty and Ollatrim catchment**

Site No.	2017
1	Moderate
2	Good
3	Moderate
4	Good
5	Moderate
6	Moderate
7	Poor
8	Moderate
9	Bad
10	Moderate
11	Bad
12	Moderate
13	Moderate
14	Moderate
15	Moderate

**Inland Fisheries Ireland: 3044 Lake Drive, Citywest Business Campus, Dublin, D24 Y265, Ireland**

CITATION: Matson, R., Delanty, K., Gordon, P., O'Briain, R., Garland, D., Cierpal, D., Connor, L., Corcoran, W., Coyne, J., McLoone, P., Morrissey-McCaffrey, E., Brett, T., Ní Dhonnabhain, L. and Kelly, F.L., (2018) Sampling Fish in Rivers 2017 – Ballintotty & Ollatrim, Factsheet No. 17. National Research Survey Programme. Inland Fisheries Ireland.

*The report includes Ordnance Survey Ireland data reproduced under OSI Copyright Permit No. MP 007508. Unauthorised reproduction infringes Ordnance Survey Ireland and Government of Ireland copyright. © Ordnance Survey Ireland, 2018.*