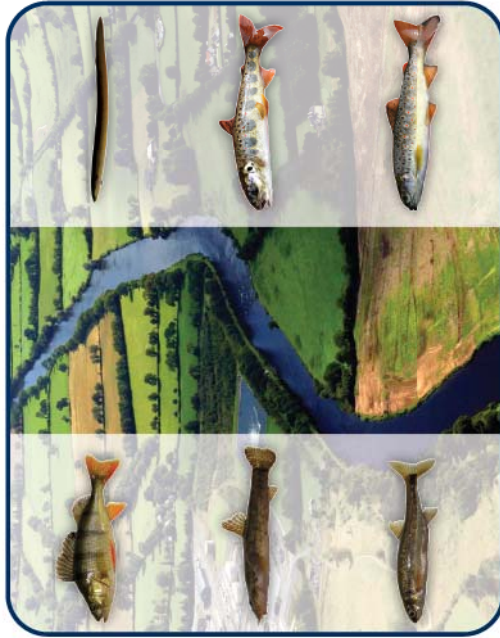


4. Fish Communities:

With the resulting increase in food and available habitat, substantial increases in a range of fish species can be expected following enhancement works. The status of all fish stocks will be monitored closely pre and post works. Particular interest is given to Atlantic salmon and brown trout channels.



5. Bird Populations:

This project will assess the effects of drainage and of river enhancement operations on bird populations. Many of the enhancement work programmes being undertaken through EREP will benefit bird life leading to increased biodiversity of not only bird communities but all wildlife associated with the river.



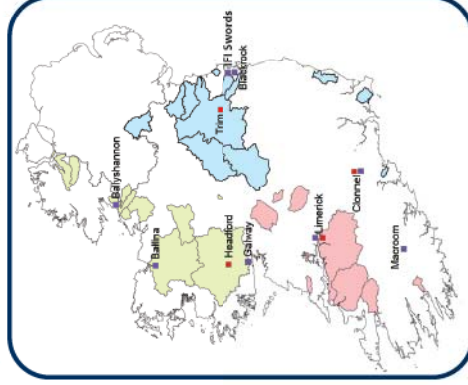
About Inland Fisheries Ireland

Inland Fisheries Ireland is a statutory body with responsibility for inland fisheries and sea angling. The principal functions of IFI are to advise the Minister on policy relating to the conservation, protection, management, development and improvement of inland fisheries.

About the Office of Public Works

The Office of Public Works is the lead agency for flood risk management in Ireland. Implementation of the EU Floods Directive and Governments policy on the management of flood risk in Ireland, in conjunction with statutory obligations under the Arterial Drainage Acts 1945 - 1995, forms one of the four core services of the OPW. Other services include Buildings and Architecture, Heritage Services and Procurement.

For Further Information Contact:



Office of Public Works,
Environment Section,
Headford,
Co. Galway.
Tel. +353 93 35456
www.opw.ie

Inland Fisheries Ireland,
Swords Business Campus,
Swords,
Co. Dublin.
Tel. +353 1 8842600
www.fisheriesireland.ie

■ OPW Regional Offices
■ IFI Regional Offices



The Environmental River Enhancement Programme

OPW
Office of Public Works
Department of Public Works
1995-2000
Inland Fisheries Ireland



The Environmental River Enhancement Programme (EREP) is an Office of Public Works (OPW) funded project, coordinated and managed jointly with Inland Fisheries Ireland. The project is a five year programme (2008 - 2012) and focuses primarily on the enhancement of selected drained salmonid rivers.

Aims of EREP

- To assist in achieving Good Ecological Status of drained rivers, to comply with the requirements of the Water Framework Directive
- To improve biodiversity on drained salmonid rivers in Ireland while maintaining their drainage function

How Do We Achieve This?

Through Strategic, Proactive and Cost Effective Partnership.

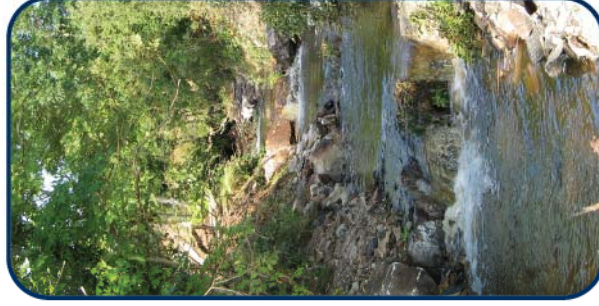
IFI in consultation with the OPW will:

- Identify suitable OPW channels for potential EREP works
- Design and implement enhancement programmes for these channels
- Monitor the effects of such works on the river corridor biodiversity and hydromorphology



EREP will have two approaches to enhancement works:

- Capital Enhancement - where capital investment is required, such as the importation of rock and spawning gravels
- Enhanced Maintenance - where available on-site materials are used and no capital investment is needed



How Do We Measure Success?

Monitoring changes to biodiversity and hydromorphology will, over time, quantify the effectiveness of enhancement work programmes.

Monitoring is carried out pre and post works covering a representative number of enhancement projects for the following aspects:

1. Hydromorphology (Physical Diversity):

Enhancing drained channels to create a more natural physical form is key to the success of the EREP programme. This will be achieved using a range of enhancement techniques that will alter both the instream and bank-side physical regime.



2. Plant Communities:

Once a more natural physical form has been created in the channel, and farm stock fenced out, rapid recovery of both aquatic and bank side vegetation will follow. Where suitable, tree planting programmes will also be undertaken.

3. Aquatic Macro-invertebrates:

Enhancement of plant communities will lead to a greater diversity and increased biomass of aquatic invertebrate communities.

